

TUNGSRAM™

Innovation is our heritage
EST.1896



European Producer
Lighting Solutions

Traditional lamps

Product catalogue

2019

tungsr.com





Joerg Bauer
President & Chief Executive Officer

Dear Partner,

Welcome to Tungram and a bright future for our respective businesses.

With a history that stretches back to 1896, the Tungram name has always been highly respected. This heritage has now entered an exciting new phase following our acquisition of GE Lighting's Europe, Middle East, Africa and Turkey operation, together with GE's Global Automotive Lighting business.

So what does this mean for you, our valued partners? I firmly believe that the revival of the Tungram brand represents a major opportunity for all of us, a chance to move forward with confidence and increase our share of national and international markets.

We will of course continue to offer a comprehensive range of market-leading lighting solutions, from traditional technologies such as HID, LFL, CFL, Halogen and Specialty lamps, to ultra-efficient, high performance indoor and outdoor LED solutions. Our renowned automotive lighting ranges include basic and premium lamps for original equipment and aftermarket, and we supply products for all major auto brands.

Our new company will drive forward the design and development of all kinds of light sources, from traditional technologies to state-of-the-art LED products, and will secure our position as a global force in lighting solutions.

In addition, we will work towards ever more efficient and advanced solutions in areas such as human centric light, energy optimisation and system intelligence.

Tungram was the most innovative Hungarian industrial company of the last century and, by applying this attitude to a 21st century business, we will deliver the solutions, products and services that your customers are looking for.

These are exciting times for Tungram. We are committed to enhancing the support we offer our partners – following the principle of “What can we do for your success?” – and we look forward to continuing our journey together.

Thank you.
Joerg

Contents

4	Introduction
7	High Intensity Discharge Lamps
27	Linear Fluorescent Lamps
41	Compact Fluorescent Lamps Non-Integrated
57	Compact Fluorescent Lamps Integrated
61	Halogen Lamps
71	Incandescent Lamps
75	Specialty lamps
78	Entertainment Lamps
90	Horticulture Lamps
92	Special Solutions Lamps
96	Cap Drawings

Tungram
name back in
the spotlight

Introduction

Serving the lighting industry through innovation and tradition



We have been at the forefront of innovation from our earliest days



The best solution for each and every application

There remains a place for virtually every type of lighting and the breadth of our ranges means we can deliver the best possible solution to any need, irrespective of the technology.

From the reliability and outstanding colour rendition of Ceramic Metal Halide (CMH) lamps to the energy efficiency of Compact Fluorescent Lamps (CFL), from the light distribution and lumen maintenance of Linear Fluorescent Lamps (LFL) to the performance and ready availability of our Specialty Lamps, we can supply the right solution for any and every application.

Our experience of working with these technologies is unsurpassed and we continue to play a central role in their development as the world looks for ever more efficient lighting solutions.

So whatever your specific combination of requirements – light quality, lamp form, colour accuracy, lumen maintenance, service life, operating cost – you can be confident of getting precisely what you need from GE Lighting.



High Intensity Discharge Lamps



High Intensity Discharge Lamps

Ultra-efficient lighting for indoor and outdoor applications

HID lamps combine high efficacy and outstanding colour rendition with a long working life to deliver a highly attractive solution for a range of indoor and outdoor applications including retail display, industrial lighting, street lighting and public areas.

Our ranges include ConstantColor™ Ceramic Metal Halide (CMH), Quartz Metal Halide (QMH) and Lucalox™ High Pressure Sodium (HPS) technologies.

ConstantColor™ CMH

Light quality

Colour is a vital part of lighting in so many ways. Retail displays need to be lit to show products' colours. Security cameras need to be able to identify colours accurately. And in modern cities that never sleep, buildings, sculptures and parks look their best when lighting brings out their true colours. ConstantColor™ CMH Lamps deliver the quality of light that these situations demand.

Reliability

It is also important that this high performance is maintained, and the ConstantColor™ technology delivers the best possible lumen maintenance to ensure that merchandise, streets and statues are lit better for longer and with no deterioration of light quality as lamps approach the end of their life.

Low cost of ownership

The excellent lumen maintenance of ConstantColor™ CMH Lamps means extended replacement cycles and, therefore, savings on maintenance cost. An extension of at least one year can be assumed when calculating relamping cycles.

- High efficacy – more lumens per Watt
- Long rated life: up to 24 000 hours
- High lumen maintenance

Why CMH?

- Highly controllable point source
- Superb colour rendition and stability
- Reliability, efficiency and longevity
- Superb lumen maintenance
- Instant replacement of less eco friendly products



Wide range of products to meet different applications

The ConstantColor™ CMH range is second to none in the variety that is on offer for both indoor and outdoor applications. Indoors, these include retail display lighting and industrial high bay lighting, and outdoors, street lighting and city beautification.

The range includes lamps for all the common formats - GU6.5, G8.5, G12, E27/E40 and Rx7s, as well as AR111, MR16 and PAR reflectors. Lighting designers can choose from 3000K and 4200K colours and their needs are also catered for by the flexibility of ballasts that can be used. GE works closely with customers and offers a list of top ballast manufacturers.

The ConstantColor™ CMH Lamps provide high quality light with low cost of ownership for every type of application, but there are also products specially developed for particular uses.

ConstantColor™ CMH Standard

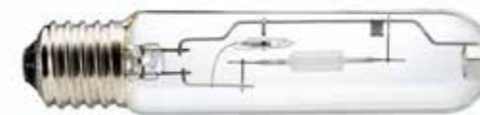
CMH Standard is the widest product range, one that offers great performance and value for replacement applications.

ConstantColor™ CMH Precise™

Developed for the retail environment, CMH Precise™ is a premium CMH range, with enhanced colour and improved lumen maintenance.

ConstantColor™ CMH StreetWise™

CMH StreetWise™ combines dimmable white light with high efficiency for street lighting. Long life and high lumen maintenance ensure maintenance is minimised.



High Intensity Discharge Lamps

CMH Indoors – innovative lighting solutions for retail and more

Combining great performance and best-in-class rated life, ConstantColor™ CMH Standard Lamps offer an attractive, value for money solution for replacement applications. Energy efficiency and excellent lumen maintenance ensure a low total cost of ownership.

- Complete range of retail lamps for wide range of applications
- Energy efficient replacement solution on existing installations
- Reduced energy bills and extended maintenance cycles
- Reduced cost of ownership through longer life
- Enables planned lighting maintenance for fixed interval replacement, optimised labour costs and reduced lamp failures

CMH Outdoors – efficient white lighting for streets and roadways

Our ConstantColor™ CMH StreetWise™ range represents a major advance in outdoor lighting technology, offering an exceptional combination of light quality and energy efficiency.

A bright white light makes these lamps ideal for street and roadway lighting. This attractive light quality – much closer to natural daylight – makes driving safer through easier recognition of shapes and colour, helps pedestrians feel more comfortable and secure, and enhances the urban environment.

A high degree of efficiency also results in substantial energy savings – an increasingly important factor when lighting accounts for more than 20% of energy consumption around the world.

Why Precise™?

- Greatly improved lumen output (4000lm – 35W and 7800lm – 70W)
- Excellent lumen maintenance (70W 80% @ 12 000 h)
- Outstanding useful life (B10: 12 000 h)
- Superb light quality and colour rendering of CRI 90+
- Improved rendering of deep red colours (R9)
- Improved lamp-to-lamp colour control
- Universal burning position
- Robust and reliable performance initially and through life



LONGER LIFE AND MORE LUMENS OVER USEFUL LIFE



EXCELLENT LUMEN MAINTENANCE – 30% MORE LUMENS AT 15 000 HOURS LIFE THAN STANDARD LAMPS



COST EFFECTIVE DIRECT RETROFIT FOR EXISTING RETAIL INSTALLATIONS

Our ConstantColor™ CMH Precise™ range is an innovative lighting solution designed to ensure the best possible results in the retail environment with significantly improved lumen maintenance and enhanced quality of light. The range allows retailers to choose the best option for their visual requirements.

- Cost effective direct retrofit for existing retail installations
- Longer life and more lumens over useful life
- Outstanding lumen output – up to 110 LPW
- Excellent lumen maintenance – 30% more lumens at 15 000 hours life than standard lamps
- Compatible with existing GE electronic ballasts



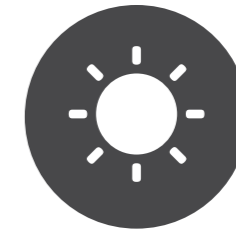
The CMH StreetWise™ Lamps especially designed for outdoor lighting offers the best of both worlds. Bright, white, 'natural' light and low costs for both running and maintenance. With CMH lighting, streets and other public spaces can

feel safer for pedestrians. More than that, their "daylight" colour rendering improves the ability of drivers to recognise shapes and colours, especially in peripheral vision. This also promotes quicker driver response times.

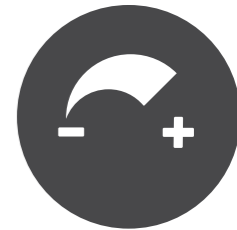
StreetWise™



HIGH EFFICIENCY AND LONG LIFE – UP TO 24 000 HOURS



VIVID COLOUR, BRIGHTER LIGHT



DIMMABLE FOR EXTRA ENERGY SAVING

- High efficiency and long life – up to 24 000 hours
- Dimmable for extra energy saving
- Uniform lighting for roadways
- Vivid colour, brighter light
- Lower running cost, lower CO₂ emissions
- Improved safety and security for pedestrians and vehicles
- Ideal for integrated systems with dimming, remote monitoring and remote control



High Intensity Discharge Lamps

Product overview



Single Ended Supermini Precise™, Ultra and Standard (GU6.5)

Cap: GU6.5
Wattages: 20 – 35W
Colours: 830, 930, 942
Rated life: 10 000 – 18 000 h



Single Ended Mini Precise™, Ultra, Ultra White and Standard (TC)

Cap: G8.5
Wattages: 20 – 70W
Colours: 830, 930, 942
Rated life: 12 000 – 18 000 h



Single Ended Precise™, Ultra, Ultra White and Standard (T)

Cap: G12
Wattages: 20 – 150W
Colours: 830, 930, 942
Rated life: 12 000 – 18 000 h



Open Rated Elliptical

Cap: E27
Wattages: 70 – 150W
Colours: 942, 940
Finish: Clear or Diffuse
Rated life: 15 000 h



Elliptical

Cap: E27, E40
Wattages: 70 – 400W
Colours: 830
Finish: Clear or Diffuse
Rated life: 10 000 – 24 000 h



StreetWise™

Cap: E27, E40
Wattages: 50 – 150W
Colours: 730
Finish: Clear
Rated life: 24 000 h



Double Ended (TD)

Cap: RX7s or RX7s-24
Wattages: 35 – 150W
Colours: 830, 942
Rated life: 15 000 h



Tubular

Cap: E27, E40
Wattages: 70 – 400W
Colours: 830, 842, 942
Finish: Clear
Rated life: 10 000 – 24 000 h

ConstantColor™ CMH (Ceramic Metal Halide) GU6.5, TC, T, TD

ConstantColor™ CMH (Ceramic Metal Halide) Elliptical and Tubular



MR16 Precise™, and Standard

Cap: GX10
Wattages: 20 – 35W
Colours: 830, 930, 942
Rated life: 10 000 – 18 000 h
Beam spread: 12 – 40°



AR111

Cap: GX8.5
Wattages: 35 – 70W
Colours: 930
Rated life: 12 000 h
Beam spread: 10 – 40°



PAR20

Cap: E27
Wattages: 20 – 35W
Colours: 830, 942
Rated life: 10 000 – 12 000 h
Beam spread: 10 – 25°



Single Ended

Cap: G12
Wattages: 70 – 150W
Colours: 3000 – 4200K
CRI: 70 – 80
Rated life: 6 000 h



Double Ended

Cap: Rx7s-Fc2
Wattages: 70 – 250W
Colours: 3000 – 6500K
CRI: 75 – 90
Rated life: 8 000 – 12 000 h



Double Ended Coloured

Cap: RX7s-24
Wattages: 150W
Colours: Green, Blue, Magenta
Rated life: 6 000 h



PAR30

Cap: E27
Wattages: 20 – 70W
Colours: 830, 942
Rated life: 10 000 – 13 000 h
Beam spread: 10 – 40°



Tubular

Cap: E40
Wattages: 250 – 400W
Colours: 4200 – 6000K
CRI: 70 – 90+
Finish: Clear
Rated life: 12 000 h



Elliptical

Cap: E40
Wattages: 250W
Colours: 4000 – 6000K
CRI: 70 – 90
Finish: Clear or Diffuse
Rated life: 12 000 – 14 000 h

ConstantColor™ CMH (Ceramic Metal Halide) Reflectors

Arcstream Metal Halide Operates on suitable metal halide/high pressure sodium ballast and metal halide ignitor

High Intensity Discharge Lamps

Product overview



Standard – Elliptical

Cap: E40
 Wattages: 250 – 1000W
 Colours: 3700 – 4200K
 CRI: 65 – 70
 Finish: Clear or Diffuse Rated
 life: 10 000 – 20 000 h



Linear

Cap: RX7SM - spec
 Wattages: 1500 – 2000W
 Colours: 5200K
 CRI: 65
 Rated life: 6 000 h



Tubular Clear

Cap: E40
 Wattages: 1000 – 2000W
 Colours: 4000 – 6000K
 CRI: 65 – 93
 Rated life: 2 000 – 8 000 h



Internal Ignitor

Cap: E40
 Wattages: 2000W
 Colours: 4000 – 6000K
 CRI: 65 – 93
 Rated life: 2 000 – 5 000 h

Multi-Vapour Metal Halide Operates from CWA Control Gear

Sportlight™ Metal Halide For sports and floodlighting



Tubular

Cap: E40
 Wattages: 400W
 Colours: 6000K & 7500K
 CRI: 90
 Finish: Clear
 Rated life: 14 000 h



Elliptical

Cap: E40
 Wattages: 400W
 Colours: 4000 – 6000K
 CRI: 65 – 90
 Finish: Clear or Diffuse
 Rated life: 14 000 h



Kolorlux™ Mercury Standard*

Cap: E27, E40
 Wattages: 50 – 400W
 Rated life: 16 000 – 20 000 h

* only direct shipment

Kolorarc™ Metal Halide Operates from suitable mercury or metal halide ballast rated 3.5A and metal halide ignitor

Mercury Lamps



Lucalox™ XO Superlife

Cap: E27, E40
 Wattages: 70 – 400W
 Feature: Extra high lumen output and
 Twin Arc tubes for extra life
 Finish: Tubular Clear or Elliptical Diffuse
 Rated life: 50 000 – 60 000 h



Lucalox™ Superlife

Cap: E27, E40
 Wattages: 50 – 250W
 Feature: Twin Arc tubes
 for extra life
 Finish: Elliptical Diffuse
 Rated life: 40 000 – 60 000 h



Lucalox™ XO

Cap: E27, E40
 Wattages: 50 – 600W
 Feature: Extra high lumen
 output
 Finish: Tubular Clear or
 Elliptical Diffuse
 Rated life: 32 000 – 45 000 h



Lucalox™ Standard

Cap: E27, E40
 Wattages: 70 – 1000W
 Finish: Tubular Clear
 or Elliptical Diffuse
 Rated life: 24 000 – 28 500 h



Lucalox™ Internal Ignitor

Cap: E27
 Wattages: 50 – 70W
 Feature: Internal ignitor
 Finish: Elliptical Clear
 or Diffuse
 Rated life: 12 000 – 17 500 h

Lucalox™ High Pressure Sodium



High Intensity Discharge Lamps

Model	Wattage (W)	Volts (V)	Cap	Product Description	GE Product Code	TU Product Code	Lumen (lm)	Colour	Operating position	Rated life (Vertical) (h)	Rated life (Horizontal) (h)	Length (mm)	Diameter (mm)	Energy Consumption (kWh)	EEC	Pack Qty
ConstantColor™ – CMH Supermini																
1	20	95	GU6.5	CMH20/TC/UVC/830/GU6.5	40399	93095259	1615	830	U	12 000	12 000	52	13	22	A	12
1	35	90	GU6.5	CMH35/T/UVC/930/U/GU6.5 PRECISE™	67685	93095260	4 000	930	U	18 000	18 000	52	13	42.9	A+	12
1	35	90	GU6.5	CMH35/T/UVC/930/GU6.5	88656	93095261	3 400	930	U	10 000	10 000	52	13	42.4	A+	12
1	35	95	GU6.5	CMH35/T/UVC/942/GU6.5	88657	93095262	3 400	942	U	12 000	12 000	52	13	42.4	A	12
ConstantColor™ – CMH Single Ended Mini																
2	20	90	G8.5	CMH20/TC/UVC/U/830/G8.5 PLUS	39858	93095263	1 650	830	U	12 000	12 000	85	14.5	21.8	A	12
2	35	90	G8.5	CMH35/T/UVC/U/830/G8.5 PLUS	43273	93095264	3 400	830	U	16 500	16 500	85	14.5	43.4	A+	12
2	35	90	G8.5	CMH35/TC/UVC/U/942/G8.5	26348	93095366	3 200	942	U	18 000	18 000	85	14.5	44.3	A	12
2	35	90	G8.5	CMH35/TC/UVC/U/930/G8.5 PRECISE™	67683	93095368	4 000	930	U	18 000	18 000	85	14.5	42.9	A+	12
2	70	90	G8.5	CMH70/TC/UVC/U/942/G8.5	26349	93095367	6 200	942	U	15 000	15 000	85	14.5	80.5	A	12
2	70	85	G8.5	CMH70/TC/UVC/U/830/G8.5 PLUS	67698	93095265	7 000	830	U	15 000	15 000	85	14.5	79.2	A+	12
2	70	85	G8.5	CMH70/TC/UVC/U/930/G8.5 PRECISE™	67681	93095369	7 800	930	U	18 000	18 000	85	14.5	80.3	A+	12
ConstantColor™ – CMH Single Ended																
3	20	90	G12	CMH20/T/UVC/U/830/G12 PLUS	42708	93095370	1 650	830	U	12 000	12 000	90	14.5	21.8	A	12
3	35	90	G12	CMH35/T/UVC/U/830/G12 PLUS	43272	93095371	3 400	830	U	16 500	16 500	90	14.5	43.4	A+	12
3	35	90	G12	CMH35/T/UVC/U/930/G12 PRECISE™	67684	93095377	4 000	930	U	18 000	18 000	90	14.5	42.9	A+	12
3	35	90	G12	CMH35/T/UVC/U/942/G12	92141	93095374	3 200	942	U	18 000	18 000	90	14.5	44.6	A	12
3	70	90	G12	CMH70/T/UVC/U/830/G12 PLUS	67699	93095372	7 000	830	U	15 000	15 000	90	19	76.5	A+	12
3	70	90	G12	CMH70/T/UVC/U/942/G12	20013	93095376	6 000	942	U	15 000	15 000	90	19	80.1	A+	12
3	70	85	G12	CMH70/T/UVC/U/930/G12 PRECISE™	67682	93095378	7 800	930	U	18 000	18 000	90	19	80.3	A+	12
3	150	90	G12	CMH150/T/UVC/U/830/G12	20012	93095373	14 000	830	U	12 000	12 000	100	19	160.3	A+	12
3	150	90	G12	CMH150/T/UVC/U/942/G12	20014	93095375	13 000	942	U	12 000	12 000	100	19	164.3	A	12

* Will be phased out

Product Description - explanation

For further information check the glossary

CMH 70 / T / UVC / U / 9 30 / G12 PRECISE™

(70) Identifies Lamp's wattage
(UVC) UV Control
(U) Operating Position
 U - Universal
 HOR - Horizontal
 BU - Base Up
 VBU - Vertical Base Up
(G12): Identifies the cap type

(CMH) Product Family
 CMH - ConstantColor™ CMH
 ARC - Arcstream™
 KRC - Kolorarc™
 MPR/MVR - Multi-Vapor™
 SPL - Sportlight™
 LU - Lucalox™
 H - Mercury
 ML - Blended Light
 BLS - Ballast

(T) Identifies the lamp format.
 TD - Double Ended
 E - Elliptical Clear
 D - Elliptical Diffused
 L - Linear
 PARxx - PAR + size
 T - Tubular Clear

(9) Colour rendering
 6 - nom 60, min 57 (Group 2B)
 7 - nom 70, min 67 (Group 2A)
 8 - nom 80, min 77 (Group 1B)
 9 - nom 90, min 87 (Group 1A)
(30) Colour temperature
 XX = First 2 digits of temperature in Kelvin - XX00K
 Example: 30 is 3000K



High Intensity Discharge Lamps

Wattage (W)	Volts (V)	Cap	Product Description	GE Product Code	TU Product Code	Lumen (lm)	Colour	Operating position	Rated life (Vertical) (h)	Rated life (Horizontal) (h)	Length (mm)	Diameter (mm)	Energy Consumption (kWh)	EEC	Pack Qty	Model
ConstantColor™ - CMH Double Ended																
35	90	RX7s	CMH35/TD/UVC/830/RX7s	43278	93102197	3 400	830	HOR±45°	—	15 000	118	21	42	A	12	4
70	90	RX7s	CMH70/TD/UVC/830/RX7s	36910	93102188	7 000	830	HOR±45°	—	15 000	118	21	80.8	A+	12	4
70	90	RX7s	CMH70/TD/UVC/942/RX7s	38698	93102191	6 200	942	HOR±45°	—	15 000	118	21	79.5	A+	12	4
150	96	RX7s-24	CMH150/TD/UVC/830/RX7s-24	36912	93102189	14 500	830	HOR±45°	—	15 000	135	27	158.8	A+	12	4
150	96	RX7s-24	CMH150/TD/UVC/942/RX7s-24	38692	93102190	12 500	942	HOR±45°	—	15 000	135	27	155.3	A+	12	4

Wattage (W)	Volts (V)	Cap	Product Description	GE Product Code	TU Product Code	Lumen (lm)	Beam Angle (°)	Colour	Operating position	Rated life (Vertical) (h)	Rated life (Horizontal) (h)	Length (mm)	Diameter (mm)	Energy Consumption (kWh)	EEC	Pack Qty	Model
ConstantColor™ - CMH MR16																	
20	95	GX10	CMH20/MR16/UVC/830/GX10/SP	40400	93102192	1 000	12	830	U	12 000	12 000	54.5	51	21.8	A	12	5
20	95	GX10	CMH20/MR16/UVC/830/GX10/FL	40401	93102193	1 000	25	830	U	12 000	12 000	54.5	51	21.7	A	12	5
20	95	GX10	CMH20/MR16/UVC/830/GX10/WFL	42691	93102196	1 000	40	830	U	12 000	12 000	54.5	51	21.8	A	12	5
35	93	GX10	CMH35/MR16/U/930/GX10/SP PRECISE™	67686	93102207	2 500	12	930	U	18 000	18 000	54.5	51	39.2	A	12	5
35	93	GX10	CMH35/MR16/U/930/GX10/FL PRECISE™	67687	93102208	2 500	25	930	U	18 000	18 000	54.5	51	39.2	A	12	5
35	93	GX10	CMH35/MR16/U/930/GX10/WFL PRECISE™	67697	93102209	2 500	40	930	U	18 000	18 000	54.5	51	39.2	A	12	5
35	90	GX10	CMH35/MR16/UVC/930/GX10/SP	88658	93102224	2 200	12	930	U	10 000	10 000	54.5	51	42.3	A	12	5
35	90	GX10	CMH35/MR16/UVC/930/GX10/FL	88659	93102225	2 200	25	930	U	10 000	10 000	54.5	51	42.2	A	12	5
35	90	GX10	CMH35/MR16/UVC/930/GX10/WFL	88660	93102226	2 200	40	930	U	10 000	10 000	54.5	51	42.3	A	12	5
35	90	GX10	CMH35/MR16/UVC/942/GX10/SP	88661	93102227	2 200	12	942	U	12 000	12 000	54.5	51	42.3	A	12	5
35	90	GX10	CMH35/MR16/UVC/942/GX10/FL	88662	93102228	2 200	25	942	U	12 000	12 000	54.5	51	42.3	A	12	5
35	90	GX10	CMH35/MR16/UVC/942/GX10/WFL	88663	93102229	2 200	40	942	U	12 000	12 000	54.5	51	42.2	A	12	5
ConstantColor™ - CMH AR111																	
35	90	GX8.5	CMH35/R111/UVC/930/GX8.5/SP10	99989	93104711	1 800	10	930	U	12 000	12 000	95	111	34.4	A	6	6
35	90	GX8.5	CMH35/R111/UVC/930/GX8.5/FL24	99990	93104712	2 100	24	930	U	12 000	12 000	95	111	34.4	A	6	6
35	90	GX8.5	CMH35/R111/UVC/930/GX8.5/FL40	99991	93104713	2 100	40	930	U	12 000	12 000	95	111	34.4	A	6	6
70	95	GX8.5	CMH70/R111/UVC/930/GX8.5/SP10	99992	93104714	3 200	10	930	U	12 000	12 000	95	111	64.3	A	6	6
70	95	GX8.5	CMH70/R111/UVC/930/GX8.5/FL24	99993	93104715	3 900	24	930	U	12 000	12 000	95	111	64.3	A	6	6
70	95	GX8.5	CMH70/R111/UVC/930/GX8.5/FL40	99994	93104716	3 900	40	930	U	12 000	12 000	95	111	64.3	A	6	6
ConstantColor™ - CMH PAR 20																	
20	95	E27	CMH20/PAR20/UVC/830/E27/SP8	26478	93104656	1 000	10	830	U	12 000	12 000	92	64	21.7	A	15	7
20	95	E27	CMH20/PAR20/UVC/830/E27/FL25	26481	93104657	1 000	25	830	U	12 000	12 000	92	64	21.9	A	15	7
35	90	E27	CMH35/PAR20/UVC/830/E27/SP10	21684	93104651	2 100	10	830	U	10 000	10 000	92	64	42.7	A	15	7
35	90	E27	CMH35/PAR20/UVC/830/E27/FL25	21685	93104652	2 100	25	830	U	10 000	10 000	92	64	42.7	A	15	7
35	90	E27	CMH35/PAR20/UVC/942/E27/SP10	44890	93104665	1 950	10	942	U	10 000	10 000	92	64	42.4	A	15	7
35	90	E27	CMH35/PAR20/UVC/942/E27/FL25	44919	93104666	1 950	25	942	U	10 000	10 000	92	64	43.8	A	15	7



High Intensity Discharge Lamps

Model	Wattage (W)	Volts (V)	Cap	Product Description	GE Product Code	TU Product Code	Lumen (lm)	Beam Angle (°)	Colour	Operating position	Rated life (Vertical) (h)	Rated life (Horizontal) (h)	Length (mm)	Diameter (mm)	Energy Consumption (kWh)	EEC	Pack Qty
ConstantColor™ - CMH PAR 30																	
1	20	95	E27	CMH20/PAR30/UVC/830/E27/SP10	26497	93104658	1200	10	830	U	12000	12000	124	95.5	21.8	A	6
1	20	95	E27	CMH20/PAR30/UVC/830/E27/FL25	26518	93104659	1200	25	830	U	12000	12000	124	95.5	21.8	A	6
1	35	90	E27	CMH35/PAR30/UVC/830/E27/SP10	21689	93104653	2400	10	830	U	10000	10000	124	95.5	43.5	A	6
1	35	90	E27	CMH35/PAR30/UVC/830/E27/FL25	21690	93104654	2400	25	830	U	10000	10000	124	95.5	43.4	A	6
1	35	90	E27	CMH35/PAR30/UVC/942/E27/SP10	44939	93104667	2225	10	942	U	10000	10000	124	95.5	43.7	A	6
1	35	90	E27	CMH35/PAR30/UVC/942/E27/FL25	44942	93104668	2225	25	942	U	10000	10000	124	95.5	43.6	A	6
1	70	90	E27	CMH70/PAR30/UVC/830/E27/SP15	21683	93104650	4700	15	830	U	13000	13000	124	95.5	81.8	A	6
1	70	90	E27	CMH70/PAR30/UVC/830/E27/FL40	21682	93104649	4700	40	830	U	13000	13000	124	95.5	81.8	A	6
1	70	90	E27	CMH70/PAR30/UVC/942/E27/SP15	74620	93104692	4300	15	942	U	10000	10000	124	95.5	82.7	A	6
1	70	90	E27	CMH70/PAR30/UVC/942/E27/FL40	74619	93104691	4300	40	942	U	10000	10000	124	95.5	82.7	A	6

Model	Wattage (W)	Volts (V)	Cap	Product Description	GE Product Code	TU Product Code	Lumen (lm)	Colour	Operating position	Rated life (Vertical) (h)	Rated life (Horizontal) (h)	Length (mm)	Diameter (mm)	Energy Consumption (kWh)	EEC	Pack Qty
ConstantColor™ - CMH Elliptical Clear, Open Rated																
2	150	95	E27	CMH150/UVC/O/U/942/E27/C	43285	93102198	13200	942	U	15000	15000	138	55	163.3	A	6
ConstantColor™ - CMH Elliptical Diffuse																
3	250	117	E40	CMH250/E/UVC/U/830/E40/D	10591	93102160	23500	830	U	24000	24000	227	90	289.4	A+	12
ConstantColor™ - CMH Elliptical Diffuse StreetWise																
4	50	87	E27	CMH50/E/UVC/U/730/E27/D STREETWISE	-	93080482	5200	730	U	24000	24000	156	71	59.95	A+	12
4	70	89	E27	CMH70/E/UVC/U/730/E27/D STREETWISE	-	93080062	7050	730	U	24000	24000	156	71	78.1	A+	12
4	100	100	E40	CMH100/E/UVC/U/730/E40/D STREETWISE	-	93079652	9870	730	U	24000	24000	186	76	107.8	A+	12
4	150	98	E40	CMH150/E/UVC/U/730/E40/D STREETWISE	-	93079653	15500	730	U	24000	24000	227	91	165	A+	12

Model	Wattage (W)	Volts (V)	Cap	Product Description	GE Product Code	TU Product Code	Lumen (lm)	Colour	Operating position	Rated life (Vertical) (h)	Rated life (Horizontal) (h)	Length (mm)	Diameter (mm)	Energy Consumption (kWh)	EEC	Pack Qty
ConstantColor™ - CMH Tubular Clear StreetWise																
5	50	87	E27	CMH50/TT/UVC/U/730/E27 STREETWISE	93028627	93102245	5450	730	U	24000	24000	156	39	59.9	A+	12
5	70	95/90	E27	CMH70/TT/UVC/U/730/E27 STREETWISE	77401	93102211	7640/7100	730	HOR±15/VBU	20000	24000	156	39	78.1	A+	12
5	100	100/95	E40	CMH100/TT/UVC/U/730/E40 STREETWISE	77399	93102210	10900/10300	730	HOR±15/VBU	20000	24000	211	48	107.8	A+	12
5	150	100	E40	CMH150/TT/UVC/U/730/E40 STREETWISE	77402	93102212	16200	730	HOR±15	-	24000	211	48	165	A+	12

Model	Wattage (W)	Volts (V)	Cap	Product Description	GE Product Code	TU Product Code	Lumen (lm)	Colour	Operating position	Rated life (Vertical) (h)	Rated life (Horizontal) (h)	Length (mm)	Diameter (mm)	Energy Consumption (kWh)	EEC	Pack Qty
ConstantColor™ - CMH Tubular Clear																
6	150	95	E40	CMH150/UVC/T/U/842/E40	21514	93102170	14500	842	U	15000	15000	209	48	160.3	A+	12
6	250	117	E40	CMH250/TT/UVC/U/830/E40	10589	93102159	25000	830	U	24000	24000	260	48	288.2	A+	12
6	250	110	E40	KRC250/CMH/830/T/H/E40	20302	93102169	20000	830	HOR	-	24000	260	48	241.6	A	12
6	250	107	E40	CMH250/T/U/942/E40	62356	93102206	25000	942	U	16000	16000	260	48	285.6	A+	12
6	400	120	E40	CMH400/TT/UVC/U/830/E40	13067	93102166	41000	830/836	U	20000	20000	278	60	454.2	A+	12

* Will be phased out
**Not CE compliant product



High Intensity Discharge Lamps

Wattage (W)	Volts (V)	Cap	Product Description	GE Product Code	TU Product Code	Lumen (lm)	CCT (K)	CRI (Ra)	Operating position	Rated life (Horizontal) (h) / Vertical (h)	Length (mm)	Diameter (mm)	Energy Consumption (kWh)	EEC	Pack Qty	Model
Arcstream™ Double Ended UVC																
70	95	RX7s	ARC70/UVC/TD/730/Rx7s	34530	93102183	5500	3000	75	HOR±45°	12000 / -	114	19	82.5	A	12	7
70	95	RX7s	ARC70/UVC/TD/742/Rx7s	34536	93102185	5500	4200	75	HOR±45°	12000 / -	114	22	82.5	A	12	7
150	95	RX7s-24	ARC150/UVC/TD/732/Rx7s-24	34527	93102182	12000	3200	75	HOR±45°	12000 / -	132	22	165	A	12	7
150	95	RX7s-24	ARC150/UVC/TD/742/Rx7s-24	34535	93102184	12000	4200	75	HOR±45°	12000 / -	132	25	165	A	12	7
Arcstream™ Double Ended RG-3																
150	95	RX7s-24	ARC150/AQUA/TD/865/Rx7s-24	35284	93102186	11000	6500	85	HOR±45°	8000 / -	132	25	165	A	12	7
150	110	RX7s-24	ARC150/TD/952/Rx7s-24	93772	93102243	11000	5200	90	HOR±45°	8000 / -	132	25	165	A	12	8
250	114	Fc2	ARC250/TD/832/Fc2	30099	93102173	20000	3200	75	HOR±45°	12000 / -	163	25	275	A	12	8
250	115	Fc2	ARC250/TD/842/Fc2	30101	93102174	20000	4200	75	HOR±45°	8000 / -	163	25	275	A	12	8

WARNING: UV emitted from lamps in Risk Group 2 and 3. Avoid eye and skin exposure to unshielded product.

Wattage (W)	Volts (V)	Cap	Product Description	GE Product Code	TU Product Code	Lumen (lm)	CCT (K)	Colour	Operating position	Rated life (Vertical) (h)	Length (mm)	Diameter (mm)	Energy Consumption (kWh)	EEC	Pack Qty	Model
Arcstream™ Double Ended Coloured UVC																
150	95	RX7s-24	ARC150/UVC/TD/GREEN/RX7s-24	12181	93102163	-	Green	-	HOR±45°	6000 / -	132	25	165	B	12	9
150	95	RX7s-24	ARC150/UVC/TD/BLUE/RX7s-24	12182	93102164	-	Blue	-	HOR±45°	6000 / -	132	25	165	C	12	9
150	95	RX7s-24	ARC150/UVC/TD/MAGENTA/RX7s-24	12184	93102165	-	Magenta	-	HOR±45°	6000 / -	132	25	165	B	12	9

Wattage (W)	Volts (V)	Cap	Product Description	GE Product Code	TU Product Code	Lumen (lm)	CCT (K)	Operating position	Rated life (Vertical) (h)	Rated life (Horizontal) (h)	Length (mm)	Diameter (mm)	Energy Consumption (kWh)	EEC	Pack Qty	Model
Arcstream™ Tubular Clear																
250	250	250	ARC250/T/H/960/E40**	32664	93102178	19000	6000	90	HOR±45°	12000 / -	220	47	299.6	A	12	10
250	250	250	ARC250/T/VBU/960/E40**	32665	93102179	19000	6000	90	VBU±45°	- / 12000	220	47	295.7	A	12	10
250	250	250	ARC250/T/H/742/E40**	42357	93102194	21000	4200	70	VBU±15°	- / 12000	220	47	294.9	A	12	10
400	400	400	ARC400/T/H/742/E40**	42369	93102195	35000	4200	70	HOR±15°	10000 / -	260	47	444.2	A	12	10

Wattage (W)	Volts (V)	Cap	Product Description	GE Product Code	TU Product Code	Lumen (lm)	CCT (K)	Operating position	Rated life (Vertical) (h)	Rated life (Horizontal) (h)	Length (mm)	Diameter (mm)	Energy Consumption (kWh)	EEC	Pack Qty	Model
Arcstream™ Elliptical Diffuse																
250**	100	E40	ARC250/D/VBU/960/E40	32666	93102180	17000	6000	90	VBU±45°	- / 12000	227	90	294.8	A	12	11

Wattage (W)	Volts (V)	Cap	Product Description	GE Product Code	TU Product Code	Lumen (lm)	CCT (K)	Operating position	Rated life (Vertical) (h)	Rated life (Horizontal) (h)	Length (mm)	Diameter (mm)	Energy Consumption (kWh)	EEC	Pack Qty	Model
Multi-Vapor™ Elliptical Clear																
250	133	E40	MVR250/U/40**	85952	93102219	20800	4200	65	U	10000 / 10000	211	90	274.9	A	12	12
400	135	E40	MVR400/U/40**	85944	93102218	40000	4000	65	U	20000 / 20000	292	117	440	A+	6	12
1000	V250 H245	E40	MVR1000/U/40	85924	93104704	108000	4000	65	U	15000 / 15000	390	178	1188	A+	6	12

* Will be phased out
**Not CE compliant product
Operating from CWA control gear.
Initial lumen values and Rated Average Life based on vertical orientation for Universal types.
Multi-Vapor™ lamps must operated in fully enclosed fixtures except those marked ** when used VBU or VBD +/-15°.
For lamps requiring enclosed fixtures, lens/diffuser material must be able to contain fragments of hot quartz or glass (up to 1100 °C).
Lamps operated in the vertical position that are not designated "Enclosed Fixtures only" lamp may be used in an open or enclosed lighting fixture depending upon the application and operating environment.
For more information contact your fixture manufacturer.



High Intensity Discharge Lamps

Model	Wattage (W)	Volts (V)	Cap	Product Description	GE Product Code	TU Product Code	Lumen (lm)	CCT (K)	CRI (Ra)	Operating position	Rated life (Vertical) (h)	Rated life (Horizontal) (h)	Length (mm)	Diameter (mm)	Energy Consumption (kWh)	EEC	Pack Qty
Kolorarc™ Tubular Clear																	
1	400	130	E40	KRC400/T/H/960/E40**	30052	93102172	28 400	6000	90	HOR±45°	—	14 000	270	58	418.5	A	12
1	400	130	E40	KRC400/T/H/970/E40	93029234	93102246	25 000	7500	90	HOR±45°	—	14 000	270	58	405	A	12
1	400	130	E40	KRC400/T/VBU/960/E40**	30704	93102177	27 000	6000	90	VBU±45°	14 000	—	270	58	404.8	A	12

Model	Wattage (W)	Volts (V)	Cap	Product Description	GE Product Code	TU Product Code	Lumen (lm)	CCT (K)	CRI (Ra)	Operating position	Rated life (Vertical) (h)	Rated life (Horizontal) (h)	Length (mm)	Diameter (mm)	Energy Consumption (kWh)	EEC	Pack Qty
Kolorarc™ Elliptical Diffuse																	
2	400**	130	E40	KRC400/D/VBU/960/E40**	10837	93102161	25 400	6000	90	VBU±45°	14 000	—	282	121	405.7	A	6

* will be phased out
 **Not CE compliant product
 Operating from suitable mercury or metal halide ballast rated 3.5A and metal halide ignitor.
 Low loss ballast recommended for 400W 6000K (960) products - see lamp data sheet for details.
 Enhanced lumen performance operating from special
 High Output ballast rated 3.8A - see lamp data sheet for details.
 Kolorarc™ lamps are only suitable for operation in fully enclosed fixtures where lens/diffuser material must be able to contain fragments of hot quartz or glass (up to 1100 °C)

Model	Wattage (W)	Volts (V)	Cap	Product Description	GE Product Code	TU Product Code	Lumen (lm)	CCT (K)	CRI (Ra)	Operating position	Rated life (Vertical) (h)	Rated life (Horizontal) (h)	Length (mm)	Diameter (mm)	Energy Consumption (kWh)	EEC	Pack Qty
Sportlight™ Linear																	
3	1500	250	RX7SM	SPL1500/L/H/652/Rx7SM	16920	93102167	120 000	5200	65	HOR±15°	—	6 000	256	24	1672	A	1
4	2000	230	spec.	SPL2000/L/H/651/SPEC	16922	93102168	200 000	5200	65	HOR±15°	—	6 000	311	26	2339.4	A	1

Model	Wattage (W)	Volts (V)	Cap	Product Description	GE Product Code	TU Product Code	Lumen (lm)	CCT (K)	CRI (Ra)	Operating position	Rated life (Vertical) (h)	Rated life (Horizontal) (h)	Length (mm)	Diameter (mm)	Energy Consumption (kWh)	EEC	Pack Qty
Sportlight™ Tubular Clear																	
5	1000	120	E40	SPL1000/T/H/960/E40	88882	93102230	80 000	6000	93	HOR±60°	—	8 000	334	65	1147.1	A	4
5	2000	125	E40	SPL2000/220V/T/H/640/E40	36078	93102187	189 000	4000	65	HOR±75°	—	2 000	430	102	2090	A+	4
5	2000	225	E40	SPL2000/380V/T/H/960/E40	30102	93102175	170 000	6000	93	HOR±60°	—	5 000	430	102	2294.8	A	4

Model	Wattage (W)	Volts (V)	Cap	Product Description	GE Product Code	TU Product Code	Lumen (lm)	CCT (K)	CRI (Ra)	Operating position	Rated life (Vertical) (h)	Rated life (Horizontal) (h)	Length (mm)	Diameter (mm)	Energy Consumption (kWh)	EEC	Pack Qty
Sportlight™ Internal Ignitor																	
6	2000	225	E40	SPL2000/380V/I/T/H/960/E40	30103	93102176	170 000	6000	93	HOR±60°	—	5 000	430	101	2292	A	4
6	2000	235	E40	SPL2000/380V/I/T/H/640/E40	33148	93102181	190 000	4000	65	HOR±75°	—	2 000	430	101	2182.3	A+	4

Please refer to technical data sheet for appropriate ballast and ignitors. Sportlight™ lamps are only suitable for use in fully enclosed fixtures, where fixture lens/diffuser material is able to contain fragments of hot quartz or glass (up to 1100° C).



1 2 3 4 5 6

High Intensity Discharge Lamps

Model	Wattage (W)	Volts (V)	Cap	Product Description	GE Product Code	TU Product Code	Lumen (lm)	CCT (K)	CRI (Ra)	Operating position	Rated Life (h)	Length (mm)	Diameter (mm)	Energy Consumption (kWh)	EEC	Pack Qty
-------	-------------	-----------	-----	---------------------	-----------------	-----------------	------------	---------	----------	--------------------	----------------	-------------	---------------	--------------------------	-----	----------

Model	Wattage (W)	Volts (V)	Cap	Product Description	GE Product Code	TU Product Code	Lumen (lm)	CCT (K)	CRI (Ra)	Operating position	Rated Life (h)	Length (mm)	Diameter (mm)	Energy Consumption (kWh)	EEC	Pack Qty
Lucalox™ XO Superlife Tubular Clear																
7	70	90	E27	LU 70/XO/SBY/T/E27	88258	93102223	6 600	2000	25	U	50 000	156	39	83.1	A+	25
7	100	100	E40	LU 100/XO/SBY/T/E40	88256	93102221	10 500	2000	25	U	60 000	211	48	110.3	A+	12
7	150	100	E40	LU 150/XO/SBY/T/E40	78737	93102213	17 500	2000	25	U	60 000	211	48	168.9	A+	12
7	250	100	E40	LU 250/XO/SBY/T/E40	78738	93102214	33 000	2000	25	U	55 000	260	48	288.7	A+	12
7	400	100	E40	LU 400/XO/SBY/T/E40	78739	93102215	55 800	2000	25	U	55 000	283	48	450.6	A++	12

Model	Wattage (W)	Volts (V)	Cap	Product Description	GE Product Code	TU Product Code	Lumen (lm)	CCT (K)	CRI (Ra)	Operating position	Rated Life (h)	Length (mm)	Diameter (mm)	Energy Consumption (kWh)	EEC	Pack Qty
Lucalox™ XO Superlife Elliptical Diffuse																
8	50	85	E27	LU50/85/XO/SBY/D/E27	97238	93102244	3 500	2000	25	U	40 000	156	72	58.3	A	12
8	70	90	E27	LU70/XO/SBY/D/E27	88257	93102222	6 000	2000	25	U	50 000	156	71	80.3	A	12
8	100	100	E40	LU100/XO/SBY/D/E40	88255	93102220	10 000	2000	25	U	60 000	186	75	113.3	A+	12

Model	Wattage (W)	Volts (V)	Cap	Product Description	GE Product Code	TU Product Code	Lumen (lm)	CCT (K)	CRI (Ra)	Operating position	Rated Life (h)	Length (mm)	Diameter (mm)	Energy Consumption (kWh)	EEC	Pack Qty
Lucalox™ XO Tubular Clear																
9	50	85	E27	LU50/85/XO/T/27	93373	93102234	4 400	2100	25	U	35 000	156	39	59.7	A	25
9	70	90	E27	LU70/90/XO/T/27	93375	93102235	6 600	2100	25	U	40 000	156	39	80.5	A+	25
9	100	100	E40	LU100/100/XO/T/40	93376	93102236	10 700	2100	25	U	40 000	211	48	111.9	A+	12
9	150	100	E40	LU150/150/XO/T/40	93377	93102237	17 500	2100	25	U	45 000	211	48	168.3	A+	12
9	250	100	E40	LU250/XO/T/40	93378	93102238	33 200	2100	25	U	45 000	260	48	285.8	A+	12
9	400	100	E40	LU400/XO/T/40	93269	93102231	56 500	2100	25	U	45 000	292	48	448.4	A++	12
9	600	115	E40	LU600/XO/T/40	93270	93102232	88 500	2100	25	U	32 000	292	48	667.3	A++	12

Model	Wattage (W)	Volts (V)	Cap	Product Description	GE Product Code	TU Product Code	Lumen (lm)	CCT (K)	CRI (Ra)	Operating position	Rated Life (h)	Length (mm)	Diameter (mm)	Energy Consumption (kWh)	EEC	Pack Qty
Lucalox™ XO Elliptical Diffuse																
10	50	85	E27	LU50/85/XO/D/27	45696	93102200	3 600	2100	25	U	35 000	156	72	58.4	A	12
10	70	90	E27	LU70/90/XO/D/27	45697	93102201	6 000	2100	25	U	40 000	156	72	83.9	A	12
11	100	100	E40	LU100/100/XO/D/40	93379	93102239	10 200	2100	25	U	40 000	186	76	112.2	A+	12
11	150	100	E40	LU150/100/XO/D/40	93380	93102240	16 900	2100	25	U	45 000	227	91	170.2	A+	12
11	250	100	E40	LU250/XO/D/40	93381	93102241	31 200	2100	25	U	45 000	227	91	285.7	A+	12
11	400	105	E40	LU400/XO/D/40	93296	93102233	54 000	2100	25	U	45 000	292	122	443.1	A+	6

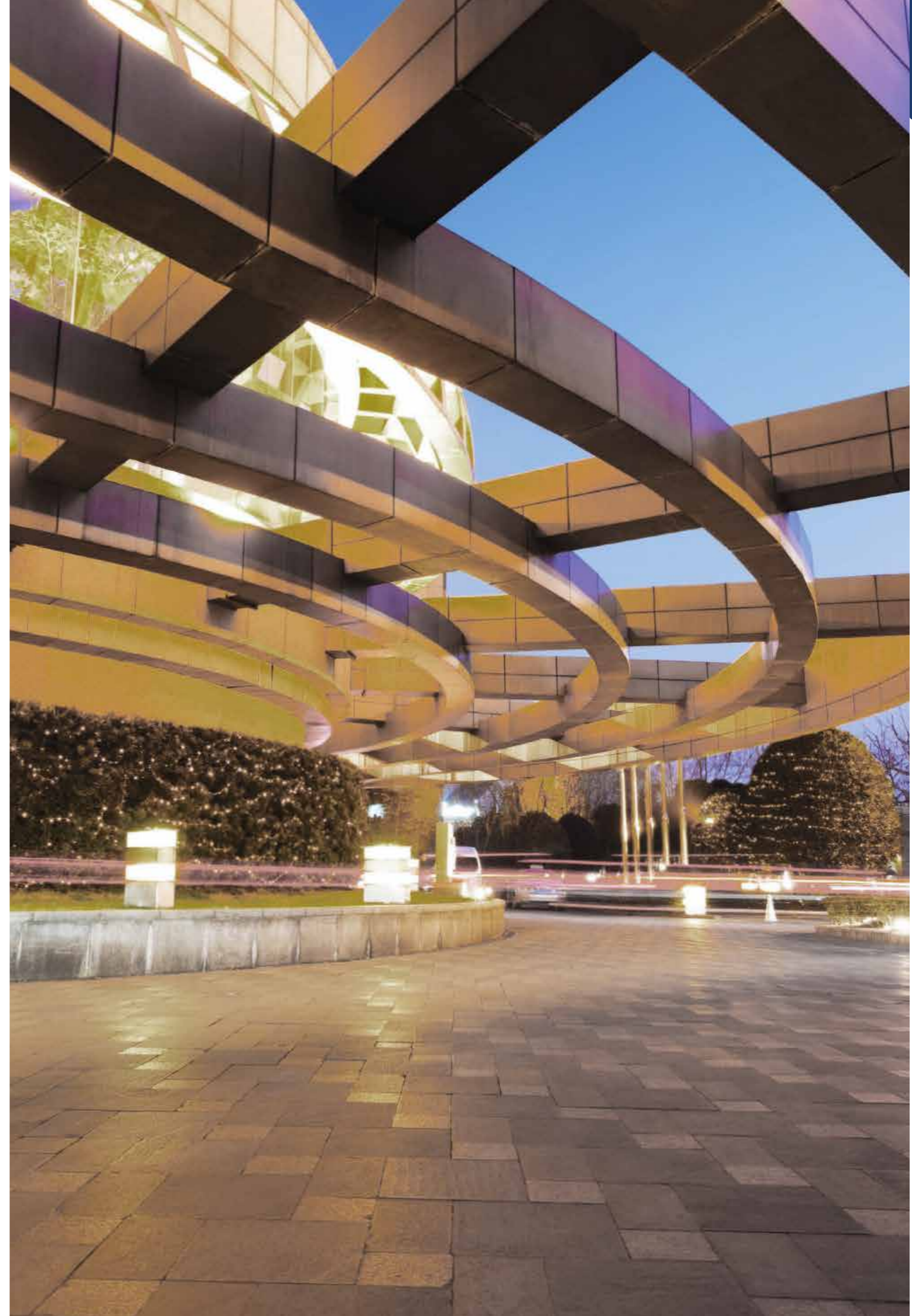


7 8 9 10 11

High Intensity Discharge Lamps

Model	Wattage (W)	Volts (V)	Cap	Product Description	GE Product Code	TU Product Code	Lumen (lm)	CCT (K)	CRI (Ra)	Operating position	Rated Life (h)	Length (mm)	Diameter (mm)	Energy Consumption (kWh)	EEC	Pack Qty
Lucalox™ Standard Tubular Clear																
2	70	90	E27	LU 70/90/MO/T/E27	46221	93102205	6 100	2000	25	U	28 000	156	39	78	A+	25
1	100	100	E40	LU100/100/MO/T/40	93767	93102242	9 600	2000	25	U	28 000	211	48	107.6	A+	12
1	150**	100	E40	LU150/100/40	44244	93102199	15 300	2000	25	U	28 000	211	48	163.8	A+	12
1	250**	100	E40	LU250/T/40	22453	93102171	28 500	2000	25	U	28 000	260	48	276.8	A+	12
1	400**	100	E40	LU400/T/40	11678	93102162	48 000	2000	25	U	28 000	278	48	431.9	A+	12
1	1000	250	E40	LU1000/40	85886	93102216	130 000	2100	22	U	24 000	383	79	1100	A+	6
1	1000	110	E40	LU1000/110/T/40	45751	93102202	130 000	2000	25	U	24 000	374	68	1067.1	A++	4
2	73	90	E27	LU70/90/HO/T/E27 MIC	93031989	93102250	6 500	2000	21	U	28 000	156	39	80.6	A+	25
1	100	100	E40	LU100/100/HO/T/E40 MIC	93032129	93102252	10 400	2000	21	U	28 000	211	48	110.44	A+	12
1	150	100	E40	LU150/100/HO/T/E40	97241	93102249	17 500	2000	21	U	28 000	283	48	172.7	A+	12
1	250	100	E40	LU250/100/HO/T/E40 MIC	93032128	93102251	32 500	2000	21	U	28 000	260	48	291.93	A+	12
2	400	100	E40	LU400/HO/T/E40	97240	93102248	56 200	2000	21	U	28 000	260	48	444.4	A++	12
Lucalox™ Standard Elliptical Diffuse																
3	70	90	E27	LU70/90/MO/D/E27	46217	93104669	5 750	2000	25	U	28 000	156	72	77.8	A	12
Lucalox™ Internal Ignitor Elliptical Clear																
3	70	90	E27	LU 70/90/MO/I/E27	46209	93102204	6 100	2000	25	U	17 500	156	72	79.4	A+	12
Lucalox™ Internal Ignitor Elliptical Diffuse																
4	70	90	E27	LU70/90/MO/D/I/E27	46186	93102203	5 750	2000	25	U	17 500	156	72	78.2	A	12
Mixed Light																
6	160	230-240	E27	OT ML 230-240V 160W E27 GE 1/24 MIC DS**	63675	93104681	3 100	4200	52	VBU±30	8 000	170	76	185.4	D	24
5	250	230-240	E40	OT ML 230-240V 250W E40 GE 1/12 MIC DS**	63678	93104684	5 500	3800	52	U	8 000	227	91	277.5	C	12
6	250	230-240	E27	OT ML 230-240V 250W E27 GE 1/12 MIC DS**	63677	93104683	5 500	3800	52	U	8 000	227	91	277.5	C	12
5	500	230-240	E40	OT ML 230-240V 500W E40 GE 1/10 MIC DS**	63676	93104682	14 000	3800	45	U	8 000	292	121	545.4	B	10

**Not CE compliant product



High Intensity Discharge Lamps

CMH

Brand cross reference

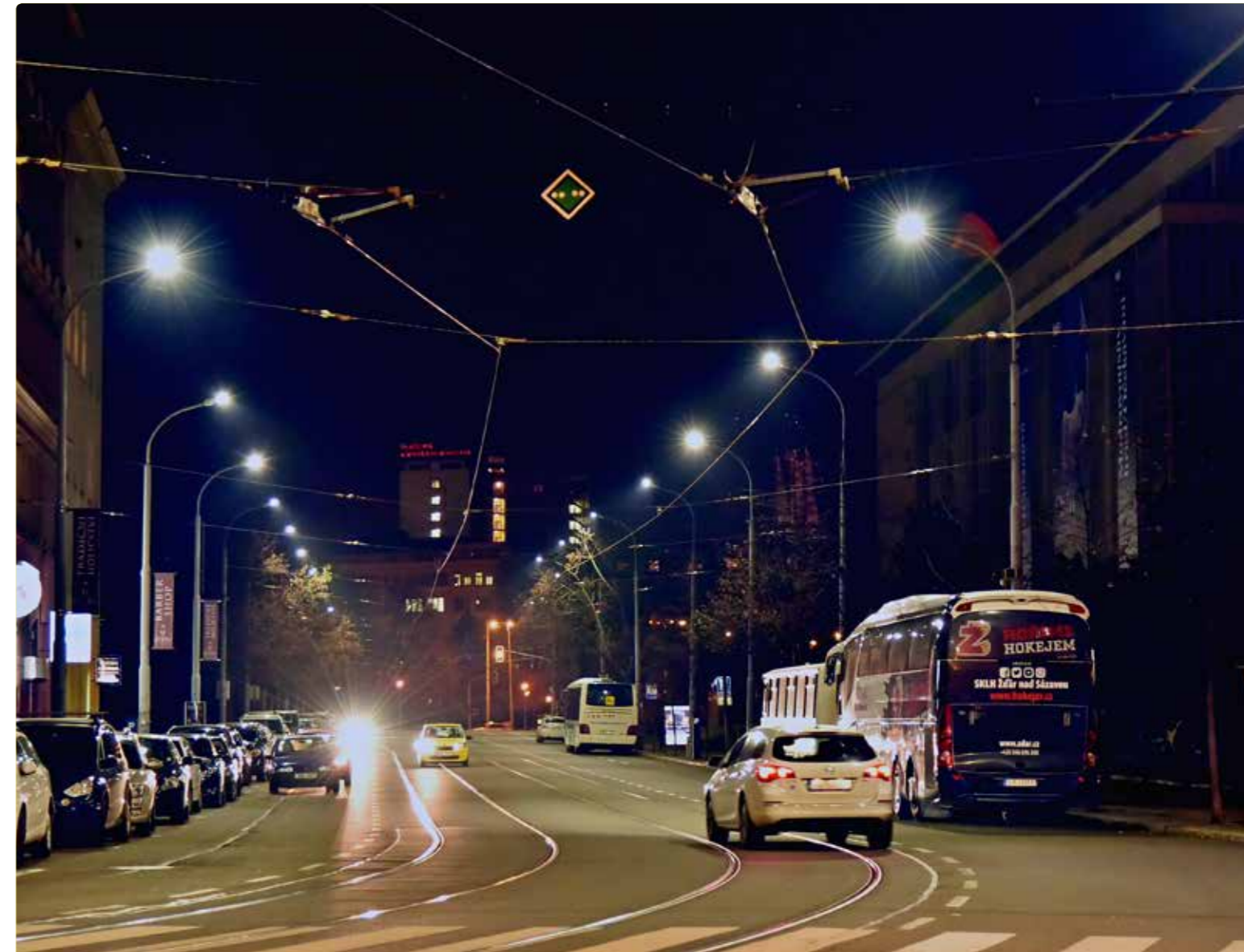
GE/ Tungstram	Osram	Philips
ConstantColor™ CMH		
CMH20/TC/UVC/830/GU6.5	HCI-TF 20W/830 WDL PB GU6.5	CDM-Tm Mini GU6.5 20W/830
CMH35/T/UVC/930/GU6.5	HCI-TF 35/930 WDL PB GU6.5	-
CMH35/T/UVC/930/U/GU6.5 PRECISE™	-	CDM-Tm Elite Mini GU6.5 35W/930
CMH35/T/UVC/942/GU6.5	-	-
CMH20/TC/UVC/U/830/G8.5 PLUS	HCI-TC 20W/830 WDL PB G8.5	CDM-TC 20W/830 G8.5
CMH35/T/UVC/U/830/G8.5 PLUS	HCI-TC 35W/830 WDL PB G8.5	CDM-TC 35W/830 G8.5
CMH35/TC/UVC/U/930/G8.5 PRECISE™	HCI-TC 35/930 WDL PB Excellence G8.5	CDM-TC Elite 35W/930 G8.5
CMH70/TC/UVC/U/942/G8.5	HCI-TC 35W/942 NDL PB UVS G8.5	CDM-TC 35W/942 G8.5
CMH70/TC/UVC/U/830/G8.5 PLUS	HCI-TC 70W/830 WDL PB G8.5	CDM-TC 70W/830 G8.5
CMH70/TC/UVC/U/942/G8.5	HCI-TC 70W/942 NDL PB G8.5	CDM-TC 70W/942 G8.5
CMH70/TC/UVC/U/930/G8.5 PRECISE™	HCI-TC 70/930 WDL PB Excellence G8.5	CDM-TC Elite 70W/930 G8.5
CMH20/T/UVC/U/830/G12 PLUS	-	CDM-T 20W/830 G12
CMH35/T/UVC/U/830/G12 PLUS	HCI-T 35W/830 WDL PB G12	CDM-T 35W/830 G12
CMH35/T/UVC/U/930/G12 PRECISE™	HCI-T 35/930 WDL PB Excellence	CDM-T Elite 35W/930 G12
CMH35/T/UVC/U/942/G12	HCI-T 35W/942 NDL PB UVS G12	CDM-T 35W/942 G12
CMH70/T/UVC/U/830/G12 PLUS	HCI-T 70W/830 WDL PB G12	CDM-T 70W/830 G12
CMH70/T/UVC/U/942/G12	HCI-T 70W/942 NDL PB UVS G12	CDM-T 70W/942 G12
CMH70/T/UVC/U/930/G12 PRECISE™	HCI-T 70/930 WDL PB Excellence	CDM-T Elite 70W/930 G12
CMH150/T/UVC/U/830/G12	HCI-T 150W/830 WDL PB G12	CDM-T 150W/830 G12
CMH150/T/UVC/U/942/G12	HCI-T 150/NDL PB UVS G12	CDM-T 150W/942 G12
CMH35/TD/UVC/830/RX7s	-	-
CMH70/TD/UVC/830/RX7s	HCI-TS 70W/830 WDL PB UVS RX7s	CDM-TD 70W/830 RX7s
CMH70/TD/UVC/942/RX7s	HCI-TS 70W/942 NDL PB UVS RX7s	CDM-TD 70W/942 RX7s
CMH150/TD/UVC/830/RX7s-24	HCI-TS 150W/830 WDL PB RX7s-24	CDM-TD 150W/830 RX7s-24
CMH150/TD/UVC/942/RX7s-24	HCI-TS 150W/942 NDL PB RX7s-24	CDM-TD 150W/942 RX7s-24
CMH20/MR16/UVC/830/GX10/SP	-	CDM-Rm Mini 20W/830 GX10 MR16 10D
CMH20/MR16/UVC/830/GX10/FL	-	CDM-Rm Mini 20W/830 GX10 MR16 25D
CMH20/MR16/UVC/830/GX10/WFL	-	CDM-Rm Mini 20W/830 GX10 MR16 40D
CMH35/MR16/UVC/930/GX10/SP	-	-
CMH35/MR16/UVC/930/GX10/FL	-	-
CMH35/MR16/UVC/930/GX10/WFL	-	-
CMH35/MR16/U/930/GX10/SP PRECISE™	-	CDM-Rm Elite Mini 35W/930 GX10 MR16 10D
CMH35/MR16/U/930/GX10/FL PRECISE™	-	CDM-Rm Elite Mini 35W/930 GX10 MR16 25D
CMH35/MR16/U/930/GX10/WFL PRECISE™	-	CDM-Rm Elite Mini 35W/930 GX10 MR16 40D
CMH35/MR16/UVC/942/GX10/SP	-	-
CMH35/MR16/UVC/942/GX10/FL	-	-
CMH35/MR16/UVC/942/GX10/WFL	-	-
CMH20/PAR20/UVC/830/E27/SP8	-	-
CMH20/PAR20/UVC/830/E27/FL25	-	-
CMH35/PAR20/UVC/830/E27/SP10	HCI-PAR20 35W/830 WDL PB SP 10D	CDM-R 35W/830 E27 PAR20L10D
CMH35/PAR20/UVC/830/E27/FL25	HCI-PAR20 35W/830 WDL PB FL 30D	CDM-R 35W/830 E27 PAR20L30D
CMH35/PAR20/UVC/942/E27/SP10	-	CDM-R 35W/942 E27 PAR20L10D
CMH35/PAR20/UVC/942/E27/FL25	-	CDM-R 35W/942 E27 PAR20L30D
CMH20/PAR30/UVC/830/E27/SP10	-	-
CMH20/PAR30/UVC/830/E27/FL25	-	-
CMH35/PAR30/UVC/830/E27/SP10	HCI-PAR30 35W/830 WDL PB SP 10D	CDM-R 35W/830 E27 PAR30L10D
CMH35/PAR30/UVC/830/E27/FL25	HCI-PAR30 35W/830 WDL PB FL 30D	CDM-R 35W/830 E27 PAR30L30D
CMH35/PAR30/UVC/942/E27/SP10	HCI-PAR30 35W/942 NDL PB SP 10D	CDM-R 35W/942 E27 PAR30L10D
CMH35/PAR30/UVC/942/E27/FL25	HCI-PAR30 35W/942 NDL PB FL 30D	CDM-R 35W/942 E27 PAR30L30D
CMH70/PAR30/UVC/830/E27/SP15	HCI-PAR30 70W/830 WDL SP E27	CDM-R 70W/830 E27 PAR30L10D
CMH70/PAR30/UVC/830/E27/FL40	HCI-PAR30 70W/830 WDL FL E27	CDM-R 70W/830 E27 PAR30L40D
CMH70/PAR30/UVC/942/E27/SP15	HCI-PAR30 70W/942 NDL PB SP 10D	CDM-R 70W/942 E27 PAR30L10D

High Intensity Discharge Lamps

CMH

Brand cross reference

GE/ Tungstram	Osram	Philips
ConstantColor™ CMH		
CMH70/PAR30/UVC/942/E27/FL40	HCI-PAR30 70W/942 NDL PB FL 30D	CDM-R 70W/942 E27 PAR30L40D
CMH70/E/UVC/U/830/E27/D	HCI-ET 70W/830 WDL PB	CDM-ET 70W /830 E27
CMH150/UVC/O/U/942/E27/C	HCI-E/P 150W/942 NDL PBMO CL E27	-
CMH250/E/UVC/U/830/E40/D	HCI-E 250W/830 WDL PB E40	-
CMH50/TT/UVC/U/730/E27 STREETWISE	HCI-TT 50W/830 SUPER 4Y	CDO-TT 50W/828 E27
CMH70/TT/UVC/U/730/E27 STREETWISE	HCI-TT 70W/830 SUPER 4Y	CDO-TT 70W /828 E27
CMH100/TT/UVC/U/730/E40 STREETWISE	HCI-TT 100W/830 SUPER 4Y	CDO-TT 100W /828 E27
CMH150/TT/UVC/U/730/E40 STREETWISE	-	CDO-TT 150W/828 E40
CMH150/UVC/T/U/842/E40	HCI-TT 150/830 WDL PB E40	-
CMH150/UVC/O/T/U/942/E40	HCI-T/P 150W/942 NDL PB E40	-
CMH250/TT/UVC/U/830/E40	HCI-T 250W/830 WDL PB E40	CDO-TT 250W /828 E27
KRC250/CMH/830/T/H/E40	-	-
CMH35/R111/UVC/930/GX8.5/SP10	-	CDM-R111 35W/830 GX8.5 10D
CMH35/R111/UVC/930/GX8.5/FL24	-	CDM-R111 35W/830 GX8.5 24D
CMH35/R111/UVC/930/GX8.5/FL40	-	CDM-R111 35W/830 GX8.5 40D
CMH35/R111/UVC/930/GX8.5/FL40	-	CDM-R111 35W/830 GX8.5 40D





Linear Fluorescent Lamps



Linear Fluorescent Lamps

Linear Fluorescent Lamps – an outstanding choice of lighting solutions

Linear Fluorescent Lamps (LFLs) deliver a versatile, effective and economical lighting solution for applications as varied as office, retail, hospitality, education and industry.

These robust and reliable products offer benefits including long life, energy efficiency, low maintenance and excellent colour rendering, and our extensive range provides the ability to choose precisely the right combination of size, wattage and colour temperature (2700-6500K). This breadth of choice is further enhanced by our energy saving Watt-Miser™ Lamps and high rated life LongLast™ products.

- Energy efficient (40-110 LPW)
- Long lasting – low maintenance requirements
- CRI 85 and outstanding lumen maintenance
- Excellent light distribution
- Dimmability for further cost/energy savings

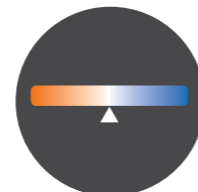
We also offer a choice of enhanced performance products in the form of our energy saving Watt-Miser™ Lamps and high rated life LongLast™ products.



LONG LIFE



REDUCED MAINTENANCE COSTS



WIDE RANGE OF COLOUR TEMPERATURES



Watt-Miser™ Lamps

- Energy saving LFLs
- Up to 10% energy savings vs. traditional LFL
- Short payback – less than a year
- Exceptional lumen maintenance



LongLast™ Lamps

- LFLs offering increased service life
- Reduced relamping costs with up to 46 000 hours rated life
- Reduced maintenance costs
- Ideal where luminaires are hard to reach



Linear Fluorescent Lamps

Product overview



WattMiser™ High Efficiency Watt-Miser™

Wattages: 13 – 33W
Colours: Warm White to Cool White
CRI (Ra): 85
Rated life: 25 000 h



WattMiser™ High Output Watt-Miser™

Wattages: 21 – 76W
Colours: Warm White to Cool White
CRI (Ra): 85
Rated life: 25 000 (30 000) h



LongLast™ High Efficiency LongLast™

Wattages: 14 – 35W
Colours: Extra Warm
White to Daylight
CRI (Ra): 85
Rated life: 30 000 h



LongLast™ High Output LongLast™

Wattages: 24 – 80W
Colours: Warm White to Daylight
CRI (Ra): 85
Rated life: 30 000 h

T5 Tubes Long



Specfill Triphosphor

Wattages: 6 – 8W
Colours: Cool White and Daylight
CRI (Ra): 80+
Rated life: 8 000 h



Specfill Standard

Wattages: 6 – 8W
Colours: Cool White and White
CRI (Ra): 52 – 60
Rated life: 8 000 h



Triphosphor

Wattages: 8 – 13W
Colours: Extra Warm
White to Cool
White
CRI (Ra): 80+
Rated life: 5 000 h



Standard

Wattages: 4 – 13W
Colours: Warm White to Cool White
CRI (Ra): 51-58
Rated life: 5 000 h

T5 Tubes Short



T5 Circline™

Wattages: 22 – 55W
Colours: Warm White to Cool White
CRI (Ra): 82
Rated life: 12 000 h

Circular Tubes



WattMiser™ Watt-Miser™

Wattages: 16 – 51W
Colours: Warm White
to Daylight
CRI (Ra): 80+
Rated life: 15 000 h



LongLast™ Polylux XLR™ LongLast™

Wattages: 18 – 58W
Colours: Warm White and
Cool White
CRI (Ra): 80+
Rated life: 28 000 h



Polylux XLR™

Wattages: 15 – 70W
Colours: Extra Warm White
to Daylight
CRI (Ra): 80+
Rated life: 15 000 h

T8 Tubes



Glow Starters

For wattages: 4 – 125W

Starters

Brand cross reference



Model	Wattage (W)	Volt (V)	Product Description	Rated Life (switching cycles)	Product Code	Pack Qty
Starter						
1	Series 4-8W, 15-22W	220-240 *	155/200/4-22W/TANDEM/BX	10 000	36711	250
1	Series 4-8W, 15-22W	220-240 *	155/200/4-22W/TANDEM/IND	10 000	36714	2,000
1	Single 4-65W	220-240	155/500 4-65W/UNIV/BX	10 000	36536	250
1	Single 4-65W	220-240	155/500 4-65W/UNIV/IND	10 000	36537	2 000
1	Single 75-125W	220-240	155/800/75-125W/BX	6 000	37864	250

* Single operation 110-130V
* Will be phased out



1

GE / Tungsram	Ostram	Philips	Sylvania
T5 Watt-Miser™ High Efficiency			
Lumilux T5 HE ES	Master TL5 HE Eco	T5 FHE Linear Ecoline	
F13W/T5/830/WM	13W/830	–	13W/T5/830
F13W/T5/840/WM	13W/840	13W/840	13W/T5/840
F20W/T5/840/WM	19W/830	–	19W/T5/830
F26W/T5/830/WM	25W/830	25W/830	25W/T5/830
F26W/T5/840/WM	25W/840	25W/840	25W/T5/840
F33W/T5/830/WM	32W/830	–	32W/T5/830
F33W/T5/840/WM	32W/840	32W/840	32W/T5/840
T5 Watt-Miser™ High Output			
Lumilux T5 HO ES	Master TL5 HO Eco	T5 FHO Linear Ecoline	
F21W/T5/840/WM	20W/840	20W/840	FHE20W/T5/840
F36W/T5/840/WM	34W/840	–	FHE35W/T5/840
F46W/T5/830/WM	45W/830	–	FHE45W/T5/830
F46W/T5/840/WM	45W/840	45W/840	FHE45W/T5/840
F51W/T5/830/WM	50W/830	–	FHE50W/T5/830
F51W/T5/840/WM	50W/840	50W/840	FHE50W/T5/840
F76W/T5/830/WM	73W/830	–	FHE73W/T5/830
F76W/T5/840/WM	73W/840	73W/840	FHE73W/T5/840
T5 LongLast™ High Efficiency			
Lumilux T5 HE XT	Master TL5 HE		
F14W/T5/827/LL	–	–	–
F14W/T5/830/LL	–	–	–
F14W/T5/835/LL	–	–	–
F14W/T5/840/LL	–	–	–
F14W/T5/865/LL	–	–	–
F21W/T5/827/LL	–	–	–
F21W/T5/830/LL	–	–	–
F21W/T5/840/LL	–	–	–
F21W/T5/865/LL	–	–	–
F28W/T5/827/LL	–	–	–
F28W/T5/830/LL	–	–	–
F28W/T5/840/LL	–	–	–
F28W/T5/865/LL	–	–	–
F35W/T5/827/LL	–	–	–
F35W/T5/830/LL	–	–	–
F35W/T5/835/LL	–	–	–
F35W/T5/840/LL	HE XT 35W/840	–	–
F35W/T5/865/LL	HE XT 35W/865	–	–
T5 LongLast™ High Output			
Lumilux T5 HO XT	Master TL5 HO Xtra		
F24W/T5/830/LL	–	–	–
F24W/T5/835/LL	–	–	–
F24W/T5/840/LL	–	–	–
F24W/T5/865/LL	–	–	–
F39W/T5/830/LL	–	–	–
F39W/T5/840/LL	–	–	–
F49W/T5/830/LL	HO XT 49W/830	–	–
F49W/T5/835/LL	–	–	–
F49W/T5/840/LL	HO XT 49W/840	49W/840	–
F49W/T5/865/LL	HO XT 49W/865	–	–
F54W/T5/830/LL	HO XT 54W/830	–	–
F54W/T5/840/LL	HO XT 54W/840	–	–
F54W/T5/865/LL	HO XT 54W/865	–	–
F80W/T5/830/LL	HO XT 80W/830	–	–
F80W/T5/840/LL	HO XT 80W/840	80W/840	–

Linear Fluorescent Lamps

Brand cross reference

T5

GE / Tungstam	Osram	Philips	Sylvania
T5 Miniature Specfill Triphosphore <small>EMERGENCY LIGHTING</small>	Lumilux T5 Short EL	Master TL Mini Super 80	T5 Emergency
F8W/T5/840/SPECFILL	8W/840	–	F8W/840/SP200
F8W/T5/865/SPECFILL	–	–	–
T5 Miniature Specfill Standard <small>EMERGENCY LIGHTING</small>	Basic T5 Short EL	TL Mini Standard	T5 Emergency
F6W/T5/33/SPECFILL	6W/640	6W/33	F6W/133/SP200
F8W/T5/35/SPECFILL	–	–	–
F8W/T5/33/SPECFILL	8W/640	8W/33	F8W/133/SP200
T5 Miniature Standard	Basic T5 short		T5 Standard
F4W/T5/35	–	–	F4W/135
F4W/T5/33	L4W/640	–	F4W/133
F6W/T5/35	–	–	F6W/135
F6W/T5/33	L6W/640	–	F6W/133
F8W/T5/29	–	–	–
F8W/T5/35	L8W/535	–	F8W/135
F8W/T5/33	L8W/640	–	F8W/133
F13W/T5/29	–	–	F13W/129
F13W/T5/35	–	–	F13W/135
F13W/T5/33	L13W/640	–	F13W/133
T5 Circline™	Lumilux T5 FC	Master TL5 Circular	T5 Circline Plus
FC22W/T5/830	FC22W/830	22W/830	22W/830
FC22W/T5/840	FC22W/840	22W/840	22W/840
FC40W/T5/830	FC40W/830	40W/830	40W/830
FC40W/T5/840	FC40W/840	40W/840	40W/840
FC55W/T5/830	FC55W/830	55W/830	55W/830
FC55W/T5/840	FC55W/840	55W/840	55W/840
T8 Watt-Miser™	Lumilux T8 ES	Master TL-D Eco	T8 Luxline Eco
F16W/T8/830/WM	16W/830 ES	–	–
F16W/T8/840/WM	16W/840 ES	16W/840	–
F16W/T8/860/WM	–	–	–
F32W/T8/830/WM	32W/830 ES	–	F32W/830
F32W/T8/840/WM	32W/840 ES	32W/840	F32W/840
F32W/T8/860/WM	–	–	F32W/865
F51W/T8/830/WM	51W/830 ES	–	F51W/830
F51W/T8/840/WM	51W/840 ES	51W/840	F51W/840
F51W/T8/860/WM	–	–	F51W/865

Linear Fluorescent Lamps

Brand cross reference

LFL

GE / Tungstam	Osram	Philips	Sylvania
T8 Polylux XLR™ LongLast™	Lumilux XT T8	Master TL-D Xtra	
F18W/T8/830/POLYLUX/LL	L18W/830XT	18W/830	–
F18W/T8/840/POLYLUX/LL	L18W/840XT	18W/840	–
F36W/T8/830/POLYLUX/LL	L36W/830XT	36W/830	–
F36W/T8/840/POLYLUX/LL	L36W/840XT	36W/840	–
F58W/T8/830/POLYLUX/LL	L58W/830XT	58W/830	–
F58W/T8/840/POLYLUX/LL	L58W/840XT	58W/840	–
T8 Polylux XLR™	Lumilux T8	Master TL-D Super 80	T8 Luxline Plus
F15W/T8/830/POLYLUX	L15W/830	15W/830	F15W/830
FF15W/T8/835 POLYLUX	–	–	F15W/835
F15W/T8/840/POLYLUX	L15W/840	15W/840	F15W/840
F15W/T8/860/POLYLUX	L15W/860	–	F15W/865
F18W/T8/827/POLYLUX	L18W/827	18W/827	F18W/827
F18W/T8/830/POLYLUX	L18W/830	18W/830	F18W/830
F18W/T8/835/POLYLUX	L18W/835	18W/835	F18W/835
F18W/T8/840/POLYLUX	L18W/840	18W/840	F18W/840
F18W/T8/860/POLYLUX	L18W/865	18W/865	F18W/865
F30W/T8/830/POLYLUX	L30W/830	30W/830	F30W/830
F30W/T8/835/POLYLUX	–	–	F30W/835
F30W/T8/840/POLYLUX	L30W/840	30W/840	F30W/840
F30W/T8/860/POLYLUX	L30W/865	–	F30W/865
F36W/T8/827/POLYLUX	L36W/827	36W/827	F36W/827
F36W/T8/830/POLYLUX	L36W/830	36W/830	F36W/830
F36W/T8/835/POLYLUX	L36W/835	36W/835	F36W/835
F36W/T8/840/POLYLUX	L36W/840	36W/840	F36W/840
F36W/T8/860/POLYLUX	L36W/865	36W/865	F36W/865
F58W/T8/827/POLYLUX	L58W/827	58W/827	F58W/827
F58W/T8/830/POLYLUX	L58W/830	58W/830	F58W/830
F58W/T8/835/POLYLUX	L58W/835	58W/835	F58W/835
F58W/T8/840/POLYLUX	L58W/840	58W/840	F58W/840
F58W/T8/860/POLYLUX	L58W/865	58W/865	F58W/860
F70W/T8/835/POLYLUX	L70W/835	70W/835	F70W/835
F70W/T8/840/POLYLUX	L70W/840	70W/840	F70W/840



Compact Fluorescent Lamps Non-Integrated



Compact Fluorescent Lamps Non-Integrated

CFLs (Non-Integrated)
– attractive,
efficient and
long-lasting

Offering significant energy savings compared with previous technologies, Compact Fluorescent Lamps (CFL) can deliver major reductions in energy consumption and CO₂ emissions, helping to reduce the environmental impact of lighting. These lamps also offer a versatile, high quality solution when space is at a premium, with low maintenance requirements and long service life for low cost of ownership.

We offer a comprehensive range of CFL products to meet different requirements, including energy saving Watt-Miser™ Lamps and the low maintenance, extended life LongLast™ range.

- Efficient technology for reduced energy consumption
- Wide range of colour and wattage (2700-6500K, 5-70W)
- Long rated life for low cost of ownership
- Motion detection available with selected drivers
- Wide choice of models for different applications
- Dimmability for further cost/energy savings



LONG LIFE



REDUCED
MAINTENANCE COSTS



REDUCED CO₂
EMISSION

WattMiser™

CFL Watt-Miser™ Lamps

- 2D™ Watt-Miser™ Lamps are direct replacements for standard 2D™ lamps (16/21/28/38W)
- Compatible with existing control gear for additional energy saving
- 2D shape suitable for broad range of applications – ideal for circular light distribution
- 'A' class energy rating – 5 – 12% extra energy saving
- Market leading life performance up to 15 000 hours

Application areas:

- Residential
- Domestic
- Hotels/motels/restaurants
- Utility areas
- Task lighting
- Emergency lighting

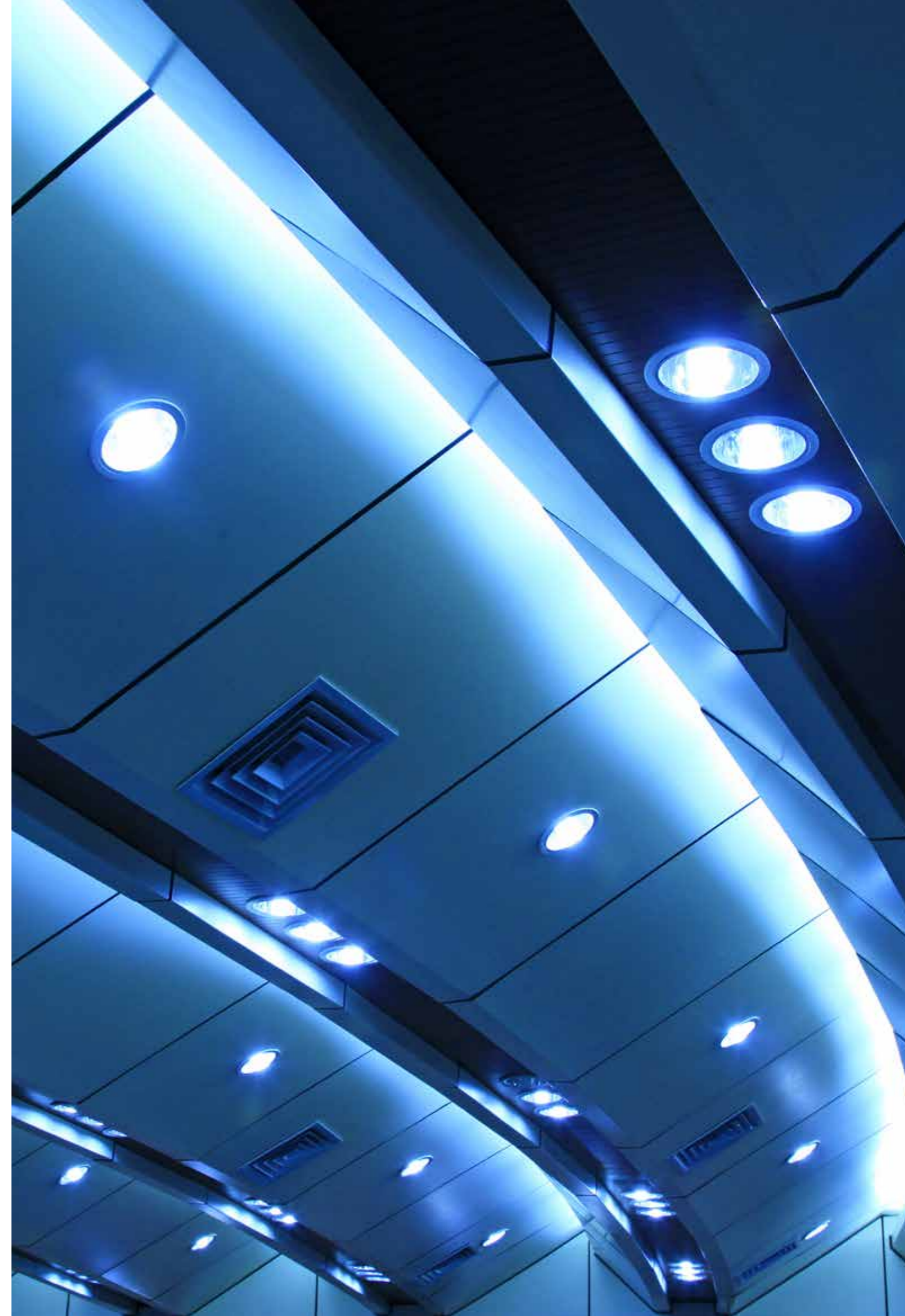
LongLast™

CFL LongLast™ Lamps

- Long service life up to 20 000 hours for significantly reduced replacement and maintenance costs
- Double, triple and quad tube (D/E, T/E, Q/E) options
- Ideal light source for small fixtures and downlighters
- Recommended control gear list and additional technical details (data sheets) at www.gelighting.com/eu

Application areas:

- Downlighting
- Corridor lighting
- Office buildings
- Hotels/motels
- Restaurants
- Retail



TC Compact Fluorescent Lamps Non-Integrated

Product overview



Biax™ S – 2-pin
 Cap: G23
 Wattages: 5-7-9-11W
 Colours: 2700 – 6500K
 Rated life: 10 000 h



Biax™ S/E – 4-pin
 Cap: 2G7
 Wattages: 5-7-9-11W
 Colours: 2700 – 6500K
 Rated life: 10 000 h
 11W version available in Red/
 Green/Blue colours.

Biax™ S



LongLast™
Biax™ Q/E – 4-pin
 Cap: GX24q
 Wattages: 57 – 70W
 Colours: 2700 – 4000K
 Rated life: 20 000 h

Biax™ Q



LongLast™
Biax™ L – 4-pin
 Cap: 2G11
 Wattages: 18 – 55W
 Colours: 2700 – 6500K
 Rated life: 15 000 – 22 500 h

Biax™ L



Biax™ D – 2-pin
 Cap: G24d
 Wattages: 10-13-18-26W
 Colours: 2700 – 6500K
 Rated life: 12 000 h

Biax™ D



LongLast™
Biax™ D/E – 4-pin
 Cap: G24q
 Wattage: 10-13-18-26W
 Colours: 2700 – 6500K
 Rated life: 20 000 h



WattMiser™
2D™ Watt-Miser™
 Cap: GR8, GR10q
 Wattages: 16 – 38W
 Colours: 2700 – 6000K
 Rated life: 12 000 – 15 000 h



Biax 2D™
 Cap: GR10q-3
 Wattages: 55W
 Colours: 2700 – 3500K
 Rated life: 10 000 h

2D™



LongLast™
Biax™ T – 2-pin
 Cap: GX24d
 Wattages: 13-18-26W
 Colours: 2700 – 4000K
 Rated life: 12 000 h

Biax™ T



LongLast™
Biax™ T/E – 4-pin
 Cap: GX24q
 Wattages: 13-18-26-32-42W
 Colours: 2700 – 4000K
 Rated life: 12 000 – 20 000 h



T Compact Fluorescent Lamps Non-Integrated

CFL Non-Integrated

Model	Wattage (W)	Volts (V)	Cap	Product Description	GE Product Code	TU Product Code	Lumen (lm)	CCT (K)	CRI (Ra)	Rated life (h)	Diameter (mm)	Length (mm)	Energy Consumption (kWh)	EEC	Pack Qty
2D™ Watt-Miser™															
1	16	103	GR8	F162D/T4/827/2P GE HB 1/10 WM	85135	93106024 *	1 100	2700	82	12 000	138	142	18.8	A	10
1	16	103	GR8	F162D/T4/835/2P GE HB 1/10 WM	85138	93106025 *	1 100	3500	82	12 000	138	142	18.8	A	10
1	16	103	GR10q	F162D/T4/827/4P GE HB 1/10 WM	85141	93106027 *	1 100	2700	82	12 000	138	142	15.4	A	10
1	16	103	GR10q	F162D/T4/835/4P GE HB 1/10 WM	85142	93106028 *	1 100	3500	82	12 000	138	142	15.4	A	10
1	16	103	GR8	F162D/T4/860/2P GE HB 1/10 WM	85140	93106026 *	1 050	6000	82	12 000	138	142	18.8	A	10
1	21	103	GR10q	F212D/T4/827/4P GE HB 1/10 WM	85143	93106029 *	1 375	2700	82	12 000	138	142	20.9	A	10
1	21	103	GR10q	F212D/T4/835/4P GE HB 1/10 WM	85144	93106030 *	1 375	3500	82	12 000	138	142	20.9	A	10
1	21	103	GR10q	F212D/T4/860/4P GE HB 1/10 WM	85145	93106031 *	1 305	6000	82	12 000	138	142	20.9	A	10
1	28	108	GR8	F282D/T5/827/2P GE HB 1/10 WM	85109	93106017 *	2 150	2700	82	15 000	202	204	31.8	A	20
1	28	108	GR10q	F282D/T5/827/4P GE HB 1/10 WM	85118	93106018 *	2 150	2700	82	15 000	202	204	27	A	20
1	28	108	GR10q	F282D/T5/830/4P GE HB1/10 WM	85120	93106019 *	2 150	3000	82	15 000	202	204	27	A	20
1	28	108	GR10q	F282D/T5/835/4P GE HB 1/10 WM	85130	93106020 *	2 150	3500	82	15 000	202	204	27	A	20
1	28	108	GR10q	F282D/T5/840/4P GE HB 1/10 WM	85132	93106021 *	2 150	4000	82	15 000	202	204	27	A	20
1	38	110	GR10q	F382D/T5/827/4P GE HB 1/10 WM	85133	93106022 *	3 020	2700	82	15 000	202	204	38	A	10
1	38	110	GR10q	F382D/T5/835/4P GE HB 1/10 WM	85134	93106023 *	3 020	3500	82	15 000	202	204	38	A	10
1	38	110	GR10q	F382D/T5/860/4P LEG HB 1/10 WM	85151	-	2 860	6000	82	15 000	202	204	38	A	10

Biax™ 2D™															
2	55	98	GR10q3	F552D/T5/827/4P A LEG HB 1/10	85148	-	3 900	2700	82	10 000	202	204	61.6	A	10
2	55	98	GR10q3	F552D/T5/830/4P A/T LEG HB 1/10	85149	-	3 900	3000	82	10 000	202	204	61.6	A	10
2	55	98	GR10q3	F552D/T5/835/4P A LEG HB 1/10	85150	-	3 900	3500	82	10 000	202	204	61.6	A	10
2	55	98	GR10q3	F552D/T5/830/4P	78339	-	3 900	3000	82	10 000	202	204	61.6	A	20

* Will be available from Q3 2019



Compact Fluorescent Lamps Non-Integrated

Brand cross reference

GE / Tungram		Ostram	Philips	Sylvania
Biax™ T/E 4-pin		Dulux T/E Plus	Master PL-T 4p0in	Lynx- TE
	F32TBX/840/A/4P/EOL	DULUX T/E 32W/840	PL-T 32W/840/4P	Lynx TE 32W/840
42W	F42TBX/827/A/4P/EOL	DULUX T/E 42W/827	PL-T 42W/827/4P	—
	F42TBX/830/A/4P/EOL	DULUX T/E 42W/830	PL-T 42W/830/4P	Lynx TE 42W/830
	F42TBX/841/A/4P/EOL	—	—	—
	F42TBX/835/A/4P/EOL	DULUX T/E 42W/840	PL-T 42W/830/4P	Lynx TE 42W/840
Biax™ Q/E 4-pin		Dulux T/E	PL-T	Lynx- TE t
57W	F57QBX/827/A/4P/EOL	—	PL-T 57W/827/4P	—
	F57QBX/830/A/4P/EOL	—	PL-T 57W/830/4P	—
	F57QBX/835/A/4P/EOL	—	—	—
70W	F57QBX/840/A/4P/EOL	—	PL-T 57W/840/4P	—
	F70QBX/830/A/4P/EOL	—	—	—
	F70QBX/835/A/4P/EOL	—	—	—
	F70QBX/840/A/4P/EOL	—	—	—
Biax™ L 4-pin		Dulux-L	PL-L	Lynx L & Lynx-LE
18W	F18BX/827	DULUX L 18W/827	—	Lynx L 18W/827
	F18BX/830	DULUX L 18W/830	PL-L 18W/830/4P	Lynx L 18W/830
	F18BX/835	DULUX L 18W/835	PL-L 18W/835/4P	—
	F18BX/840	DULUX L 18W/840	PL-L 18W/840/4P	Lynx L 18W/840
24W	F24BX/827	DULUX L 24W/827	—	Lynx L 24W/827
	F24BX/830	DULUX L 24W/830	PL-L 24W/830/4P	Lynx L 24W/830
	F24BX/835	DULUX L 24W/835	PL-L 24W/835/4P	—
	F24BX/840	DULUX L 24W/840	PL-L 24W/840/4P	Lynx L 24W/840
34W	F34BX/830	—	—	—
	F34BX/835	—	—	—
	F34BX/840	—	—	—
36W	F36BX/827	DULUX L 36W/827	—	Lynx L 36W/827
	F36BX/830	DULUX L 36W/830	PL-L 36W/830/4P	Lynx L 36W/830
	F36BX/835	DULUX L 36W/835	—	—
	F36BX/840	DULUX L 36W/840	PL-L 36W/840/4P	Lynx L 36W/840
40W	F36BX/865	DULUX L 36W/865	PL-L 36W/865/4P	Lynx L 36W/865
	F40BX/830	DULUX L 40W/830	PL-L 40W/830/4P	Lynx LE 40W/830
	F40BX/835	DULUX L 40W/835	PL-L 40W/835/4P	Lynx LE 40W/835
55W	F40BX/840	DULUX L 40W/840	PL-L 40W/840/4P	Lynx LE 40W/840
	F55BX/830	DULUX L 55W/830	PL-L 55W/830/4P	Lynx LE 55W/830
	F55BX/835	DULUX L 55W/835	PL-L 55W/835/4P	Lynx LE 55W/835
	F55BX/840	DULUX L 55W/840	PL-L 55W/840/4P	Lynx LE 55W/840
	F55BX/854	DULUX L 55W/865	PL-L 55W/865/4P	Lynx LE 55W/865

Compact Fluorescent Lamps Non-Integrated

Brand cross reference

GE / Tungram		Ostram	Philips	Sylvania
Biax™ 2D 2-pin		ColourTemperature	PL-Q 2-pin	Lynx-Q (GR8 base) 2 pin
16W	F162D/T4/827/2P GE HB 1/10 WM	2700	CFL Square 16W/827	Lynx-Q 16W/827/2P
	F162D/T4/835/2P GE HB 1/10 WM	3500	CFL Square 16W/835	Lynx-Q 16W/835/2P
	F162D/T4/860/2P GE HB 1/10 WM	6000	—	—
28W	F282D/T5/827/2P GE HB 1/10 WM	2700	CFL Square 28W/827	—
Biax™ 2D 4-pin		ColourTemperature	PL-Q 4-pin	Lynx-QE 4 pin
10W	OT F10W/2D/827/4P GE BL 1/20	2700	—	—
	OT F10W/2D/835/4P GE BL 1/20	3500	—	—
16W	F162D/T4/827/4P GE HB 1/10 WM	2700	CFL Square 16W/827	Lynx-QE 16W/827/4P
	F162D/T4/835/4P GE HB 1/10 WM	3500	CFL Square 16W/835	Lynx-QE 16W/835/4P
21W	F212D/T4/827/4P GE HB 1/10 WM	2700	—	—
	F212D/T4/835/4P GE HB 1/10 WM	3500	—	—
28W	F212D/T4/860/4P GE HB 1/10 WM	6000	—	—
	F282D/T5/827/4P GE HB 1/10 WM	2700	CFL Square 28W/827	Lynx-QE 28W/827/4P
	F282D/T5/830/4P GE HB1/10 WM	3000	—	---
	F282D/T5/835/4P GE HB 1/10 WM	3500	CFL Square 28W/835	Lynx-QE 28W/835/4P
38W	F282D/T5/840/4P GE HB 1/10 WM	4000	—	Lynx-QE 28W/840/4P
	F382D/T5/827/4P GE HB 1/10 WM	2700	CFL Square 38W/827	Lynx-QE 38W/827/4P
	F382D/T5/835/4P GE HB 1/10 WM	3500	—	Lynx-QE 38W/835/4P
55W	F382D/T5/860/4P LEG HB 1/10 WM	6000	—	—
	F552D/T5/827/4P A LEG HB 1/10	2700	—	—
	F552D/T5/830/4P A/T LEG HB 1/10	3000	—	—
	F552D/T5/835/4P A LEG HB 1/10	3500	—	—





CFL Integrated

CFL Integrated



Compact Fluorescent Lamps Integrated



TR Compact Fluorescent Lamps Integrated

Compact Fluorescent Lamps Integrated TR

CFLs (Integrated)
– versatile, energy
efficient lighting

Our extensive range of integrated Compact Fluorescent Lamps (CFL) provides an attractive and versatile lighting solution in a choice of sizes, shapes (e.g. spiral, stick, decorative) and caps.

Offering an efficient, high quality replacement for older technologies across most applications – including domestic, office, retail and hospitality – CFLs combine high quality lighting and instant-on, flicker-free light with impressive energy efficiency. The benefits of this low energy consumption and a reduction in CO₂ emissions are further enhanced by a rated life of up to 15 000 hours, resulting in a low total cost of ownership and reduced maintenance requirements.

Our ranges include products with colour temperatures from 2700-6500K, and are available in decor incandescent sizes and lookalike shapes (e.g. Spiral T2, Stick T3), with both ES and BC caps.



LONG RATED LIFE FROM
6 000 TO 15 000 HOURS



UP TO 80%
ENERGY SAVINGS



REDUCED CO₂ EMISSIONS
VS. OLDER TECHNOLOGIES

These products offer an energy-saving alternative to incandescent bulbs across virtually all applications, with technological advances meaning they are now often even smaller than the lamps they replace.

- Long rated life from 6 000 to 15 000 hours
- Flicker free, instant on light with fast warm-up
- Environmentally friendly with low mercury content
- Special option – high switching cycles up to 100 000
- Up to 80% energy savings vs. traditional incandescent on our 'A' energy labeled products

Model	Wattage (W)	Volts (V)	Cap	Product Description	GE Product Code	TU Product Code	Lumen (lm)	CCT (K)	CRI (Ra)	Rated life (h)	Length (mm)	Diameter (mm)	Energy Consumption (kWh)	EEC	Pack Qty	Model
Spiral T2 – 8 000 - 10 000 hours																
13	8	220-240	E14	FLE8HLX/T2/827/E14	85637	93076712	470	2700	82	8 000	93	46	8	A	8	1
14	8	220-240	E27	FLE8HLX/T2/827/E27	85638	93076713	470	2700	82	8 000	90	46	8	A	10	2
13	8	220-240	E14	FLE8HLX/T2/865/E14	85633	-	430	6500	82	8 000	93	46	8	A	8	1
14	8	220-240	E27	FLE8HLX/T2/865/E27	85634	-	430	6500	82	8 000	90	46	8	A	8	2
15	12	220-240	E14	FLE12HLX/T2/827/E14	85639	93076714	715	2700	82	10 000	102	46	11	A	6	3
16	12	220-240	E27	FLE12HLX/T2/827/E27	85640	93076715	715	2700	82	10 000	100	46	11	A	6	4
16	12	220-240	E27	FLE12HLX/T2/865/E27	85635	-	665	6500	82	10 000	100	46	11	A	10	4
15	12	220-240	E14	FLE12HLX/T2/865/E14	93010291	-	665	6500	82	10 000	102	46	12	A	10	3
15	15	220-240	E27	FLE15HLX/T2/865/E27	85636	-	900	6500	82	10 000	107	50	15	A	10	3
15	15	220-240	E27	FLE15HLX/T2/827/E27	85642	93076716	950	2700	82	10 000	107	50	15	A	10	3
17	15	220-240	B22	FLE15HLX/T2/827/B22	85643	-	950	2700	82	10 000	106	50	15	A	6	5
16	15	220-240	E27	FLE15HLX/T2/827/E27	34175*	93076717	950	2700	82	10 000	107	50	15	A	18	4
16	20	220-240	E27	FLE20HLX/T2/827/E27	85644	-	1 220	2700	82	10 000	108	55	19	A	6	4
16	20	220-240	E27	FLE20HLX/T2/840/E27	85646	-	1 200	4000	82	10 000	108	55	19	A	6	4
16	20	220-240	E27	FLE20HLX/T2/865/E27	85647	93076718	1 200	6500	82	10 000	108	55	19	A	6	4
16	23	220-240	E27	FLE23HLX/T2/827/E27	85648	-	1 450	2700	82	10 000	115	60	22	A	10	4
17	23	220-240	B22	FLE23HLX/T2/827/B22	85649	-	1 450	2700	82	10 000	114	60	22	A	10	5
16	23	220-240	E27	FLE23HLX/T2/840/E27	85650	-	1 380	4000	82	10 000	115	60	22	A	6	4
16	23	220-240	E27	FLE23HLX/T2/865/E27	85651	85651	1 380	6500	82	10 000	115	60	23	A	6	4

* Will be phased out



Product Description - explanation
For further information check the glossary

FLE 8 **HLX** / **T2** / **827** / **E14**

FLE Identifies as Fluorescent Electronic (Screw-in lamp)

8 Identifies lamp wattage

HLX Identifies as the lamp type
DBX = Double-Bi-ax Stick (2U)
TBX = Triple-Bi-ax Stick (3U)
QBX = Quad-Bi-ax Stick (4U)
HLX = Heliox (Spiral)
SPH = Spherical
GG = Globe

T2/T3/T4/T5 refers to the size of the tube

827 Colour definition
827=Extra Warm White
830=Warm White
835=White
840=Cool White
865=Daylight

E14/E27/B15/B22 Identifies the lamp cap



Halogen

Halogen



Halogen Lamps



TR Halogen Lamps

Low voltage Halogen lamps for outstanding colour rendering

Our range of low voltage Halogen reflector lamps provides an attractive choice of compact, high output light sources with a wide scope for creative lighting. Combining very high light quality, intensity and control with efficient use of energy, these lamps are ideal for applications where space is at premium.

Low voltage Halogen reflector lamps feature an advanced, computer designed reflector gives a smooth beam and outstanding light output compared to similar lamps. Ideal for downlighting and accent lighting applications, they offer precise beam control, high efficacy, excellent white light and cool beam characteristics.

- Up to 43% energy savings vs. conventional MR16 lamps
- Instant on, full light output at start-up
- Crisp white light, CCT up to 3000K
- 100% dimmable for additional cost savings
- Outstanding colour rendering, close to natural light (100%CRI)
- Environmentally friendly with no mercury or lead



100% DIMMABLE FOR ADDITIONAL COST SAVINGS



UP TO 30% ENERGY SAVINGS VS. CONVENTIONAL LAMPS



OUTSTANDING COLOUR RENDERING, CLOSE TO NATURAL LIGHT (100%CRI)

MR16 ranges

Our MR16 Halogen Reflector Lamps feature special technologies – including patented reflector coating and multiple layers of a very durable, thin interference film – to deliver more light for the same power input and outstanding colour rendering throughout a working rated life of up to 6 000 hours.

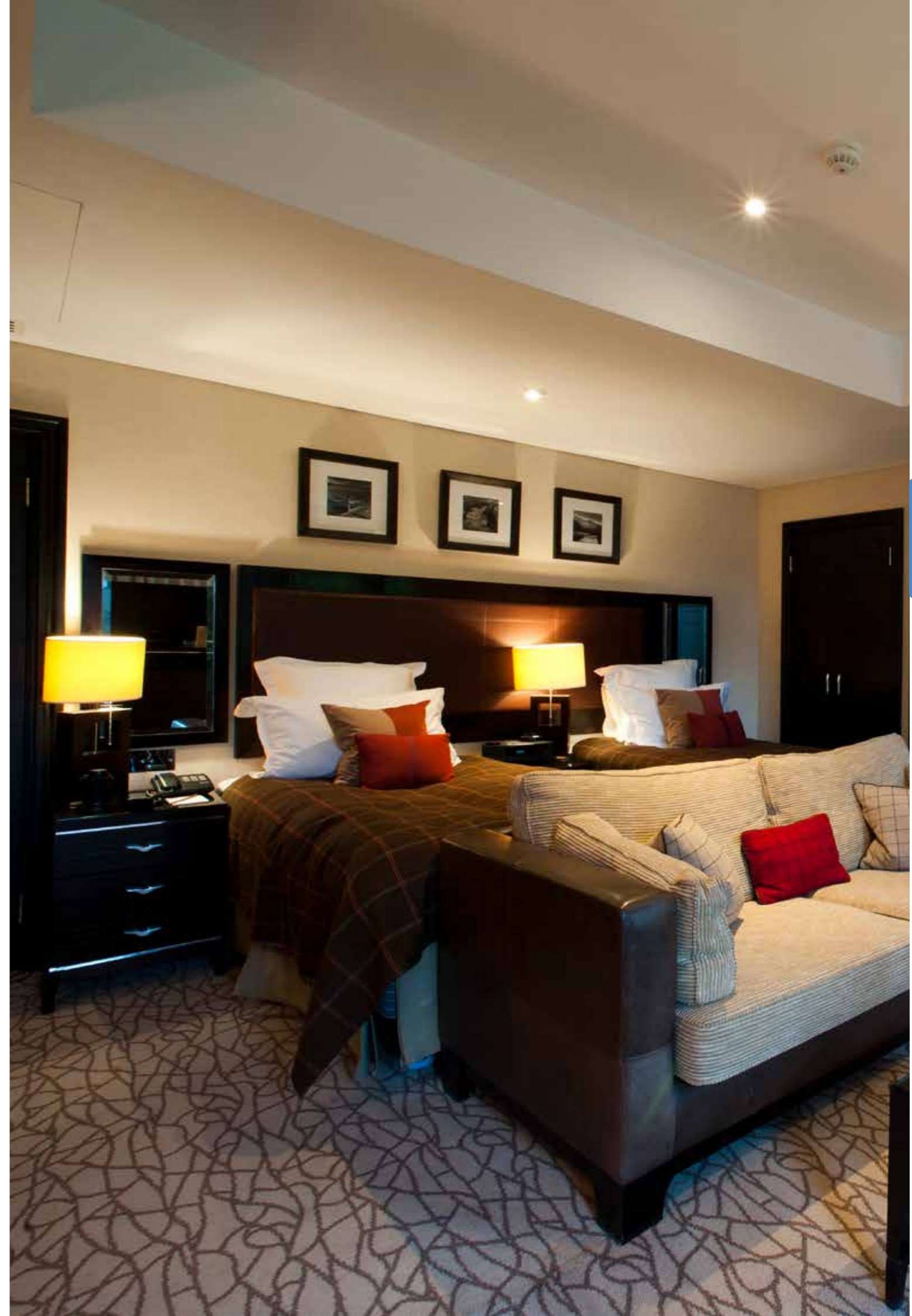
Decor HaloGLS

Our Decor range is available in a choice of styles (GLS, candle, spherical) and bases to enable immediate retrofit replacement of traditional lamps and deliver the immediate benefits of instant-on, crisp white light plus full compatibility with dimming switches.



From 1 September 2016 a new European Ecodesign regulation entered into force, which phased out all mains voltage halogen reflectors and also part of the low voltage reflectors. After this date only the high performing low voltage Halogen Reflector Lamps can be placed on the EU market.

You can find various LED lamp alternatives for all the impacted halogen reflector types.



TR Halogen Lamps

Product overview



MR11
 Cap: GU4
 Wattages: 12 – 35W
 Volts: 12V
 Rated life: 2 000 – 3 500 h



Precise™ Bright 5000 MR16
 Cap: GU5.3
 Wattages: 20 – 50W
 Volts: 12V
 Beam Spread: 18 – 60°
 Rated life: 5 000 h

Low Voltage Reflectors



GLS
 Cap: E27, B22
 Wattages: 20 – 100W
 Volts: 230, 240V
 Rated life: 2 000 h




Candle
 Cap: E14, E27, B15, B22
 Wattages: 20 – 42W
 Volts: 230, 240V
 Rated life: 2 000 h




Spherical
 Cap: E14, B15, E27, B22
 Wattages: 20 – 42W
 Volts: 230, 240V
 Rated life: 2 000 h


Decor



Mains Voltage Capsule G9
 Cap: G9
 Wattages: 20 – 42W
 Volts: 230, 240V
 Rated life: 1 000 – 2 000 h



Low voltage capsule – Transversal Filament
 Cap: G4 or GY6.35
 Wattages: 5 – 100W
 Volts: 6, 12, 24V
 Rated life: 100 – 4 000 h



Low voltage capsule – Axial Filament
 Cap: G4 or GY6.35
 Wattages: 10 – 100W
 Volts: 6, 12V
 Rated life: 2 000 – 4 000 h

Capsules




Tubular T38
 Cap: E40
 Wattage: 1000
 Volts: 230, 240V
 Rated life: 2 000 h

Tubular



Linear 117 mm
 Cap: R7s
 Wattages: 130 – 330W
 Volts: 230, 240V
 Rated life: 2 000 h

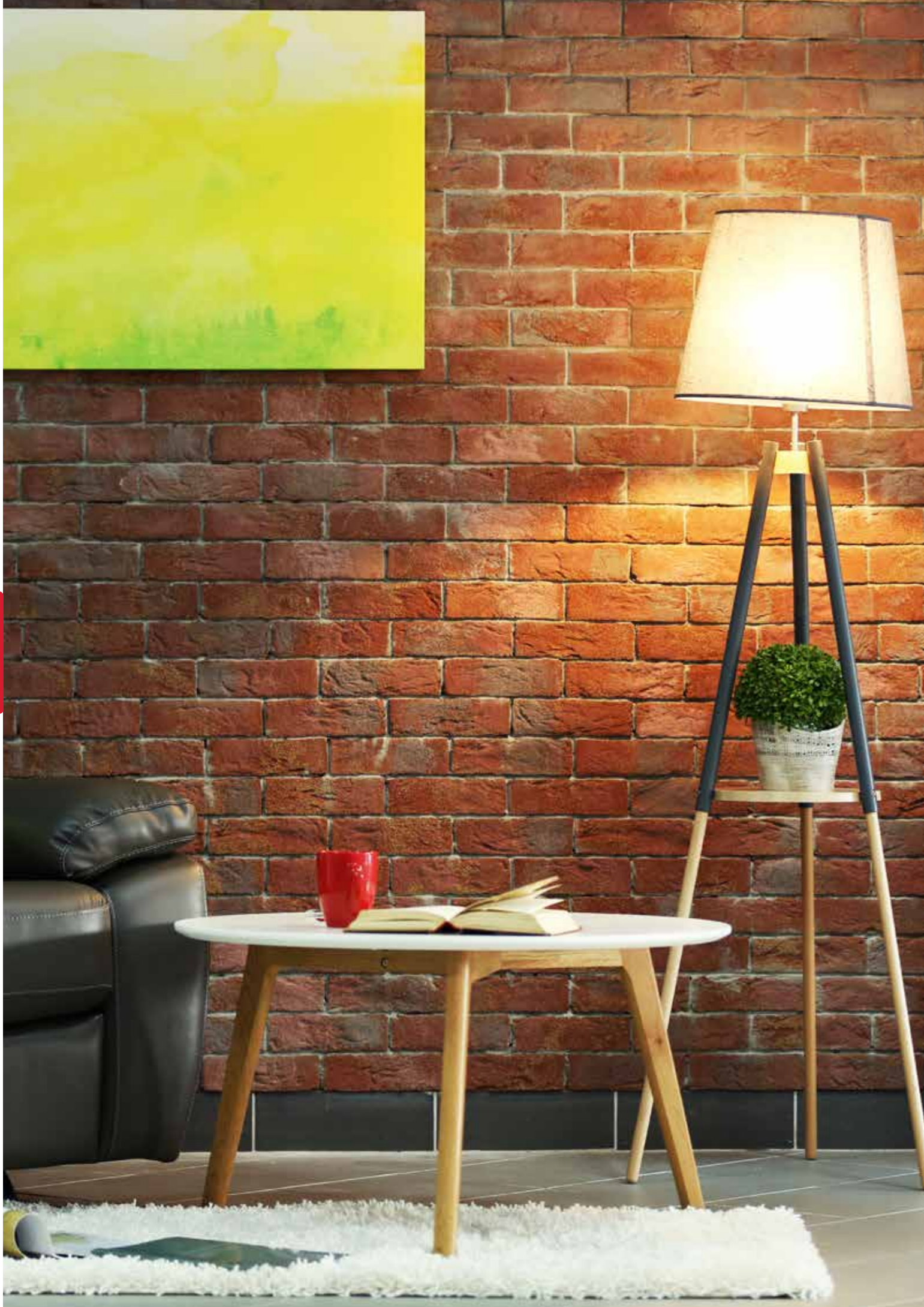


Linear 78 mm
 Cap: R7s
 Wattages: 100W
 Volts: 230, 240V
 Rated life: 2 000 h



Linear - High Watt
 Cap: R7s
 Wattages: 1000 – 2000W
 Volts: 230, 240V
 Rated life: 2 000 h

Linear



Incandescent

Incandescent



Incandescent Lamps



Incandescent Lamps

Specialised Lamps for special applications

Incandescent lamps designed to satisfy specialised requirements

Recent years have seen the use of Incandescent Lamps phased out across most applications as new technologies have superseded them. Across the EMEA region, this has been driven by legislation based on the EU Ecodesign Directive, legislation that covers all energy using products sold in the domestic, commercial and industrial sectors.

We have been at the forefront of this change, developing new technologies that operate with greater efficiency, less cost and less environmental impact than ever before. We invented Incandescent technology and we know how to replace it.

Today, the Ecodesign requirements allow exemption for a limited number of Incandescent Lamp types and we continue to supply high quality products for these highly specialised applications:

- Pygmy for oven, freezer and sewing machine
- Infrared reflector
- Low Voltage GLS
- Coloured decorative lamps



FOR SPECIAL ENVIRONMENTS



FOR INFRARED APPLICATIONS



COLOURED LAMPS



As a member of ELC (European Lamp Companies Federation), we are fully committed to this regulation and to offering a complete range of new, energy efficient products to replace old Incandescent lamps.



Incandescent

Incandescent

Incandescent Lamps

Product overview



Standard

Cap: E27, B22 or E40
Wattages: 25 – 300W
Finish: Clear or Frosted
Rated life: 1 000 h



Low Volt

Cap: E27
Wattages: 25 – 100W
Voltage: 24V
Finish: Clear or Frosted
Rated life: 1 000 h



R39

Cap: E14
Wattages: 25 – 30W
Rated life: 1 000 h



R63

Cap: E27
Wattages: 40W
Rated life: 1 000 h



Coloured R50, R63, R80

Cap: E27, E14
Wattages: 40 – 60W
Rated life: 1 000 h

GLS

Reflector



Standard

Cap: E14, E27 or B22
Wattages: 15 – 60W
Finish: Clear or Frosted
Rated life: 1 000 h



Oven

Cap: E14 or E27
Wattages: 25, 40W
Finish: Clear
Rated life: 300 h



Coloured

Cap: E14, E27
Wattages: 15W
Finish: 5 colours
Rated life: 1 000 h



Infrared Hard Glass

Cap: E27
Wattages: 100 – 275W
Finish: Clear, Red or Satin
Rated life: 5 000 h

Spherical

Infrared Reflector



Standard

Cap: E14, E27
Wattages: 25 – 60W
Finish: Opal, Frosted or Clear
Rated life: 1 000 h

Candle



Standard and Appliance

Cap: E14
Wattages: 15 – 25W
Finish: Clear
Rated life: 1 000 h

Pygmy

Model	Wattage (W)	Volts (V)	Cap	Product Description	GE Product Code	TU Product Code	Lumen (lm)	Rated life (h)	Diameter (mm)	Length (mm)	Energy Consumption (kWh)	EEC	Pack Qty
Standard GLS – Clear													
1	25	240	E27	25A1/CL/E27	19944*	-	225	1 000	50	88,5	25	E	1/10/120
1	40	240	E27	40A1/CL/E27	84755*	-	410	1 000	50	88,5	40	E	1/10/120
1	60	240	E27	60A1/CL/E27	84757*	-	700	1 000	50	88,5	60	E	1/10/120
1	60	240	E27	60A1/CL/E27**	19947*	-	700	1 000	50	88,5	60	E	1/10/120
1	75	240	E27	75A1/CL/E27	84758*	-	930	1 000	50	88,5	75	E	1/10/120
1	100	240	E27	100A1/CL/E27	84759*	-	1330	1 000	50	88,5	100	E	1/10/120
1	150	230	E27	150A65/CL/E27	84774*	-	2160	1 000	65	123	150	E	1/20
1	200	230	E27	200A1/CL/E27	84777*	-	3040	1 000	80	142	200	E	1/20
1	200	230	E27	200A1/CL/E27**	91127*	-	3 040	1 000	80	142	200	E	1/20
1	300	230-240	E27	300A1/CL/E27**	91226*	-	4 850	1 000	90	168	300	E	1/20
1	60	240	B22	60A1/CL/B22**	19962*	-	700	1 000	50	88,5	60	E	1/10/120
Standard GLS – Frosted													
2	40	240	E27	40A1/F/E27	19952*	-	410	1 000	50	88,5	40	E	1/10/120
2	60	240	E27	60A1/F/E27	19954*	-	700	1 000	50	88,5	60	E	1/10/120
2	100	240	E27	100A1/F/E27**	19956*	-	1 330	1 000	50	88,5	100	E	1/10/120
Low Volt GLS – Clear ***													
1	25	24	E27	25A1/CL/E27 24V**	35178	-	320	1 000	60	104,5	25,5	D	1/10/100
1	40	24	E27	40A1/CL/E27 24V**	91876	-	580	1 000	60	104,5	44,5	D	1/10/100
1	60	24	E27	60A1/CL/E27 24V**	91877	-	930	1 000	60	104,5	64	D	1/10/100
1	100	24	E27	100A1/CL/E27 24V**	35174	-	1 740	1 000	60	104,5	107,4	D	1/10/100
Low Volt GLS – Frosted													
2	60	24	E27	60A1/F/E27 24V**	91875	-	930	1 000	60	104,5	64,1	D	1/10/100
2	100	24	E27	100A1/F/E27 24V**	91873	-	1 740	1 000	60	104,5	106,7	D	1/10/100
Spherical – Clear													
3	25	230	E27	25D1/CL/E27	84795*	-	210	1 000	45	69,5	25	E	1/10/50
3	40	240	E14	40D1/CL/E14	84752*	-	400	1 000	45	74	40	E	1/10/100
3	40	240	E27	40D1/CL/E27	84808*	-	400	1 000	45	69,5	40	E	1/10/50
3	40	230	E27	40D1/CL/E27**	90565*	-	400	1 000	45	69,5	40	E	1/10/50
3	60	240	E14	60D1/CL/E14	84754*	-	660	1 000	45	74	60	E	1/10/100
3	60	230	E27	60D1/CL/E27	84769*	-	660	1 000	45	69,5	60	E	1/10/50

* Not CE compliant product
 ** Will be delisted
 *** Banned in the EU from Sept/2018

Product Description - explanation

For further information check the glossary

15 / **A1** / **FR** / **E27**

Identifies lamp wattage

Identifies the lamp type: A1=GLS, C1=Candle, Rxx=Reflector/IR = Infrared (xx=diameter), P1=Pygmy, D1=Spherical

Identifies the finish of the lamp: F/FR = Frosted CL = Clear O/SL = Opal R/Y/G/B = Colour options

Identifies the cap type



Wattage (W)	Volts (V)	Cap	Product Description	GE Product Code	TU Product Code	Lumen (lm)	Rated life (h)	Diameter (mm)	Length (mm)	Energy Consumption (kWh)	EEC	Pack Qty	Model	
Spherical – Frosted														
4	40	230	E27	40D1/F/E27	90567*	-	400	1 000	45	69,5	40	E	1/10/50	4
4	40	240	E14	40D1/FR/E14	84791*	-	400	1 000	45	74	40	E	1/10/100	4
4	60	240	E14	60D1/FR/E14	84793*	-	660	1 000	45	74	60	E	1/10/100	4
4	60	240	E27	60D1/FR/E27	84810*	-	660	1 000	45	69,5	60	E	1/10/50	4
Spherical Oven - Clear														
5	25	230	E27	25D1/CL/E27	12513	-	140	300	45	71	25	E	1/10/100	5
5	40	230	E14	40D1/CL/E14	12462	-	320	300	45	74	40	E	1/10/50	5
5	40	230	E27	40D1/CL/E27	12515	-	320	300	45	71	40	E	1/10/100	5
Coloured Spherical														
6	15	230	E27	15D1/R/E27**	90531*	-	Red	1 000	45	69,5	14,3	-	1/10/50	6
6	15	230	E27	15D1/Y/E27**	90527*	-	Yellow	1 000	45	69,5	14,3	-	1/10/50	6
6	15	230	E27	15D1/G/E27**	91521*	-	Green	1 000	45	69,5	14,3	-	1/10/50	6
6	15	230	E27	15D1/B/E27**	91522*	-	Blue	1 000	45	69,5	14,3	-	1/10/50	6

* Not CE compliant product
 ** Will be delisted



Incandescent Lamps

Incandescent Lamps

Model	Wattage (W)	Volts (V)	Cap	Product Description	GE Product Code	TU Product Code	Lumen (lm)	Rated life (h)	Diameter (mm)	Length (mm)	Energy Consumption (kWh)	EEC	Pack Qty
Candle - Clear													
1	25	240	E14	25C1/CL/E14	84763*	-	210	1 000	35	97	25	E	1/10/50
1	40	240	E14	40C1/CL/E14	84770*	-	400	1 000	35	97	40	E	1/10/50
1	60	240	E14	60C1/CL/E14	84772*	-	660	1 000	35	97	60	E	1/10/50
1	40	240	E27	40C1/CL/E27**	84781*	-	400	1 000	35	93	40	E	1/10/100
1	60	240	E27	60C1/CL/E27**	84782*	-	660	1 000	35	93	60	E	1/10/100
Candle - Frosted													
2	25	240	E14	25C1/FR/E14	91680*	-	210	1 000	35	97	25	E	1/10/50
2	40	230	E14	40C1/SL/E14	84765*	-	360	1 000	35	97	40	E	1/10/50
2	40	240	E14	40C1/FR/E14	84805*	-	400	1 000	35	97	40	E	1/10/50
2	60	240	E14	60C1/FR/E14	84806*	-	660	1 000	35	97	60	E	1/10/50
2	60	240	E27	60C1/FR/E27**	84789*	-	660	1 000	35	93	60	E	1/10/100



Model	Wattage (W)	Volts (V)	Cap	Product Description	GE Product Code	TU Product Code	Candela (cd)	Beam Angle (°)	Rated life (h)	Diameter (mm)	Length (mm)	Energy Consumption (kWh)	EEC	Pack Qty
Reflector - R39														
3	30	230	E14	30R39/E14**	84804*	-	80	65	1 000	39	64.5	30.5	E	1/10/100
3	30	240	E14	30R39/E14**	84812*	-	80	65	1 000	39	64.5	30.5	E	1/10/100
Reflector - R50														
3	25	230	E14	25R50/E14**	84814*	-	200	35	1 000	50	86	25	E	1/10/50
3	40	230	E14	40R50/E14**	84773*	-	300	35	1 000	50	86	40.3	E	1/10/50
3	40	230	E14	40R50/E14**	84818*	-	300	35	1 000	50	86	40.3	E	1/10/50
3	60	230	E14	60R50/E14**	84802*	-	600	35	1 000	50	86	60.2	E	1/10/50
Reflector - R63														
4	40	230	E27	40R63/E27**	84799*	-	250	35	1 000	63.5	100	40.3	E	1/10/40
4	60	230	E27	60R63/E27**	84767*	-	410	35	1 000	63.5	100	60.2	E	1/10/40
4	60	230	E27	60R63/E27	84800*	-	410	35	1 000	63.5	100	60.2	E	1/10/40
Reflector - R80														
4	60	230	E27	60R80S/E27**	92839*	-	450	35	1 000	80	109.5	60.7	E	1/10
4	75	230	E27	75R80S/E27	84817*	-	600	35	1 000	80	109.5	75	E	1/10
4	100	230	E27	100R80S/E27**	92860*	-	800	35	1 000	80	109.5	100	E	1/10

* Not CE compliant product
** Will be delisted



1 2 3 4

Wattage (W)	Volts (V)	Cap	Product Description	GE Product Code	TU Product Code	Colour	Rated life (h)	Diameter (mm)	Length (mm)	Energy Consumption (kWh)	EEC	Pack Qty	Model
Coloured Reflector - R50													
40	230	E14	40R50/R/E14**	91386	-	Red	1 000	50	86	39.2	N/A	1/25	5
40	230	E14	40R50/Y/E14**	91388	-	Yellow	1 000	50	86	39.2	N/A	1/25	5
40	230	E14	40R50/G/E14**	91389	-	Green	1 000	50	86	39.2	N/A	1/25	5
40	230	E14	40R50/B/E14**	91387	-	Blue	1 000	50	86	39.2	N/A	1/25	5
Coloured Reflector - R63													
40	230	E27	40R63/R/E27**	91532	-	Red	1 000	63.5	100	39.4	N/A	1/25	6
40	230	E27	40R63/Y/E27**	91531	-	Yellow	1 000	63.5	100	39.4	N/A	1/25	6
40	230	E27	40R63/B/E27**	91530	-	Blue	1 000	63.5	100	39.4	N/A	1/25	6
Coloured Reflector - R80													
60	230	E27	60R80/Y/E27**	91527*	-	Yellow	1 000	80	109.5	57.3	N/A	1/40	6

* Not CE compliant product
** Will be delisted



5 6

Incandescent Lamps

Model	Wattage (W)	Volts (V)	Cap	Product Description	GE Product Code	TU Product Code	Lumen (lm)	Rated life (h)	Diameter (mm)	Length (mm)	Energy Consumption (kWh)	EEC	Pack Qty
Infrared Reflector Hard Glass - Clear													
1	150	230-240	E27	150R/IR/CL/E27	28720	509699	-	5 000	125	173	-	-	1/9
1	250	230-240	E27	250R/IR/CL/E27	28724	509702	-	5 000	125	173	-	-	1/9
1	275	230-240	E27	275R/IR/CL/E27	32569	-	-	5 000	125	173	-	-	1/9
Infrared Reflector Hard Glass - Red front													
2	100	230	E27	100R95/IR/R/E27**	92365*	-	-	6 000	95	129	-	-	1/32
2	150	240	E27	150R/IR/R/E27	91372	509701	-	5 000	125	173	-	-	1/10
2	250	240	E27	250R/IR/R/E27	91391	509715	-	5 000	125	173	-	-	1/10
Infrared Reflector Hard Glass - Satin													
2	150	240	E27	150/IR/F/E27	91288	509700	-	5 000	125	173	-	-	1/10
2	250	240	E27	250R/IR/F/E27	91390	509714	-	5 000	125	173	-	-	1/10
Pygmy Freezer - Clear													
3	15	230	E14	15P1/CL/E14	12512	-	85	1 000	28	60	15.6	E	1/10/50
3	15	240	E14	15P1/CL/E14	84811	509705	85	1 000	25	55	-	-	1/10/50
3	15	240	E14	15P1/CL/E14	91950	509706	85	1 000	25	55	15.3	E	1/10/50
3	25	230	E14	25P1/CL/E14	84807	509709	190	1 000	28	60	24.8	E	1/10/50
Pygmy Oven - Clear													
3	15	230-240	E14	15P1/RS/CL/E14	84790	-	85	1 000	22.5	48	15.1	E	300
3	25	230	E14	25P1/OVEN25/CL/E14	43381	-	160	1 000	25	55	23.6	E	1/50
3	25	230-240	E14	25P1/OVEN/T25/CL	43381	-	160	1 000	25	55	23.6	E	250
Pygmy Sewing machine													
3	15	240	B15	15P1/CL/SBC 200/250V 28 SEWM	31831	509707	85	1 000	28	60	-	E	1/50
3	25	240	E14	25P1/CL/SES 200/250V 28 SEWM	31851	510500	80	1 000	28	60	-	E	1/50

* Not CE compliant product

** Will be delisted



1

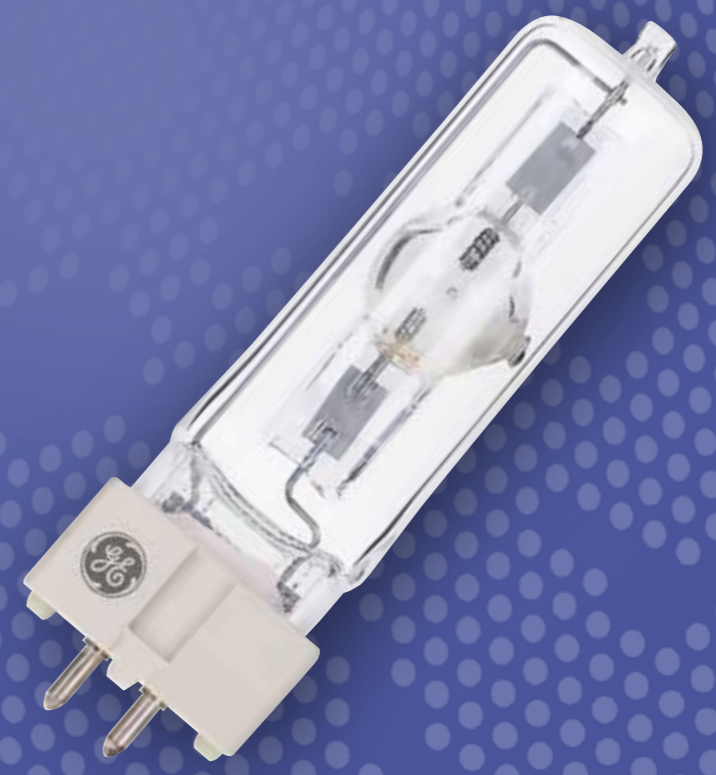
2

3



Incandescent

Incandescent



Specialty Lamps



Specialty

Specialty

TC Specialty Lamps

Our leading role in the development of all kinds of lighting technologies enables us to offer advanced, high performance solutions for specialised applications as diverse as film studios, rock concerts, airport runways and even fly traps! Following are our main areas of expertise:

Entertainment

We are a leading supplier to the entertainment industry, with a range of lamp technologies sold under the SHOWBIZ® brand including incandescent, halogen, metal halide and low energy compact fluorescent. Our ranges encompass everything from low watt to 24 000W products with bases to fit most known fixtures, and are used in applications such as:

- Film and broadcast (including studio and location)
- Events and concert tours
- Club and disco
- Theatre
- Specialist projection (e.g. photographic studio)

Horticulture

Artificial photosynthesis lighting plays an important role in improving the yield and quality of greenhouse crops, and for controlling day-night lengths to suit the needs of particular flowering plants. Our Lucalox™ Photosynthesis Lamp (PSL) range offers a number of important advantages:

- Properly balanced blue and red to optimise growth
- Improves the yield and quality of greenhouse crops
- Optimum light and PAR (Photosynthetically Active Radiation) output
- More PAR on average compared to standard HPS
- Wide range 250 – 750W with 230 and 400 V options (operated on electronic ballast)

Special applications

We have a choice of lamp technologies – fluorescent/halogen, low/high watt, cap options – to meet the needs of a diverse range of special applications including:

- Health & safety (bacterial destruction, shatter protection)
- Insect control (e.g. fly traps in food preparation areas)
- Industrial heating (radiant heat for applications such as paint drying)
- Airfields (lamps for runways and taxiway lighting)



ENTERTAINMENT



HORTICULTURE



SPECIAL APPLICATIONS



Specialty Lamps / Entertainment Lamps

Product overview



Cinema Studio Biax™

Wattage: 55W
Lumens: 2 400 - 4 100
CCT: 3200 & 5600K
Rated life: Up to 8 000 h



Single Ended Hot Restrike

Wattages: 125 - 18 000W
Lumens: 9 800 - 1 650 000
CCT: 6000K
Rated life: Up to 750 h



Single Ended Halogen

Wattage: 1 250 - 24 000W
Volts: 230 - 240V
Lumens: 13 000 - 800 000
CCT: 3050 - 3400K
Rated life: Up to 500 h



PAR

Range: PAR36, 46, 56, 64
Wattage: Up to 1 200W
Candelas: Up to 765 000
Rated life: Up to 4 000 h

Film and Broadcast

Club and Disco



Double ended halogen

Cap: R7s
Wattages: 500 - 2 000W
Rated life: 75 - 400 h



Single ended halogen HPL

Cap: G9.5/Heat Sink
Wattages: 375 - 750W
Rated life: 300 - 2 000 h



Single ended halogen

Cap: G9.5
Wattages: 575 - 6 750W
Rated life: 300 - 2 000 h



CSS/CSI/CID

Cap: G38
Wattages: 400 - 1 000W
Rated life: 500 - 3 500 h

Theatre

Projection and photography



Single Ended Cold Start

Wattage: Up to 1 200W
Lumens: Up to 110 000
CCT: 6500 - 9000K
Rated life: 800 - 3 000 h

Event and Tour



Model	Wattage (W)	Volts	Cap	Product description	GE Product Code	TU Product Code	Lumens	CCT (K)	LIF Code	ANSI Code	Rated life (h)	Length (mm)	Operating position	EEC	Outer qty
Single Ended Halogen															
1	5000	240	G38	HX5000 240V	71379	93106388	133 000	3200	-	-	200	270	U	C	6
2	5000	230	G38	CP29 230V	88875	93106391	13 500	3200	CP29	-	375	279	BDTH	C	12
1	5000	240	G38	CP29 240V	88876	93106392	13 000	3200	CP29	-	375	279	BDTH	C	12
3	10 000	220-230	G38	OT CP83 220-230V 10000W BX 1/1 MIJ	12036	93106218	280 000	3200	CP83	-	500	405	BDTH	C	1
3	10 000	240	G38	OT CP83 240V 10000W BX 1/1 MIJ	12037	93106219	280 000	3200	CP83	-	500	405	BDTH	C	1
4	12 000	230	GX38	Q12MT26/CL 230V	48771	93106380	400 000	3400	-	-	130	410	BD45	B	1
4	12 000	240	GX38	Q12MT26/CL 240V	48779	93106383	400 000	3400	-	-	130	410	BD45	C	1
5	20 000	240	GX38	BCM Q20MT32/4CL 240	48774	93106381	580 000	3200	-	BCM	400	560	BD45	C	1
6	24 000	240	GX38	Q24MT32/CL 240V	48777	93106382	800 000	3400	-	-	150	560	BD45	B	1
7	1250+1250	230-240	GX38q	CP30 230- 240V	88877	93106393	27 000 + 27 000	3200	CP30	-	300	220	BD45	D	1
7	1250+2500	230-240	GX38q	CP58 230-240V	88878	93106394	27 000 + 59 000	3200	CP58	-	300	220	BD45	C	1
7	1250+650	230-240	GX38q	CP105 1250/650W 230-240V	88880	93106395	27 000 + 13 000	3050	CP105	-	250	220	BD45	D	1
8	1000	230	GY9.5	GAB 230V 1000W	93082618	93106558	25 000	3200	-	GAB	250	88	BD	C	12
8	1000	240	GY9.5	GAD 240V 1000W	93082619	93106559	25 000	3200	-	GAD	250	88	BD	C	12



Wattage (W)	Volts	Cap	Product description	GE Product Code	TU Product Code	Lumen (lm)	CCT (K)	Rated life (h)	Length (mm)	Operating position	EEC	Energy Consumption (kWh)	Outer quantity	Model
Discharge - Single Ended Cold Start														
250	95	GY9.5	CSD 250/2 SE	10744	-	18 000	8500	3 000	108	U	A	275.00	10	9
575	95	GX9.5	CSR575/2/SE	15378*	93106220	48 000	7800	1 000	125	U	A	632.50	10	10
575	97	GX9.5	CSR575/2/SE	69064	93110788	46 000	7200	1 000	125	U	A	632.50	10	10
700	70	G22	CSR700/2/SE	49491	93106385	55 000	6500	1 000	155	U	A	770.00	10	11
1200	100	G22	CSR1200/2/SE	49490	93106384	110 000	7000	800	175	U	A+	1320.00	6	12
575	97	GX9.5	CSR575/2/T/SE	49492*	-	42 000	7600	1 000	125	U	A	632.5	10	10
1700	85	PG28	CSR1700/TAL/60/PGJX28	93104482	93108711	150 000	6000	750	123	U	-	-	-	-



Specialty Lamps / Entertainment Lamps

Brand cross reference

SKU	GE / Tungram	Osram	Philips
Discharge - Single Ended Hot Restrike			
48461	CSR125/SE/HR	HMI125W	MSR125/HR
93011465	CSR200/SE/HR/UV-C	HMI200W/SE	MSR200/HR
93011463	CSR800/SE/HR/UV-C	HMI800W/SEL	-
27764	CSR 1200 SE/HR/UV- C	HMI1200W/SE	MSR1200/HR
77390	CSR 1800/SE/HR	HMI1800W/SE/XS	-
40482	CSR 2500/SE/HR/UV-C	HMI2500W/SE	MSR2500/HR
27765	CSR 4000SE/HR/UV- C	HMI4000W/SE	MSR4000/HR
40492	CSR 6000/SE/HR/UV-C	HMI6000W/SE	MSR6000/HR
22496	CSR18000/SE/HR	HMI18000W/SE	MSR18000/HR
48453	CSR1200/DE	HMI1200W/GS	MSI1200
48456	CSR6000/DE	HMI6000W	MSI6000
48457	CSR12000/DE	HMI12000W/GS	MSI12000
48459	CSR18000/DE	HMI18000W	-
Discharge - Single Ended Cold Start			
10744	CSD 250/2 SE	HSD250/80	MSD250/2
49492	CSR575/2/T/SE	HSR575/2	MSR575/2
49491	CSR700/2/SE	HSR700/2	MSR700/2
49490	CSR1200/2/SE	HSR1200/2	MSR1200/2
Discharge - CSR Turn and Lock (TAL)			
78718	CSR700/TAL/PGJX28	HTI 700W/75/P28	MSR 700/2 MiniFastFit
Discharge - Double Ended Hot Restrike			
45231	CSR575/SS/DE/75	-	-
22493	CSR700/S/DE/60	HTI700W/D4/60	-
41357	CSR700/S/DE/72	HTI700W/D4/75	MSR700/SA/2/DE
21849	CSR 1200/SA	HTI1200W/SE	MSR1200/SA





250W
 Lamp volts: 115V
 Current: 2.7A
 Wattage: 250W
 100 h lumens: 33 000
 100 h PAR: 430 μmole/sec
 Packing: 12



400W
 Lamp volts: 110V
 Current: 4.3A
 Wattage: 420W
 100 h lumens: 56 500
 100 h PAR: 710 μmole/sec
 Packing: 12 or 63



600W
 Lamp volts: 115V
 Current: 6.0A
 Wattage: 615W
 100 h lumens: 90 000
 100 h PAR: 1080 μmole/sec
 Packing: 12 or 63



750W
 Lamp volts: 115V
 Current: 7.4A
 Wattage: 755W
 100 h lumens: 112 000
 100 h PAR: 1320 μmole/sec
 Packing: 12 or 63

Single Ended 230V



600W EL
 Lamp volts: 200V
 Current: 3.6A
 Wattage: 620W
 100 h lumens: 85 000
 100 h PAR: 1120 μmole/sec
 Packing: 12 or 63
 (Electronic ballast)

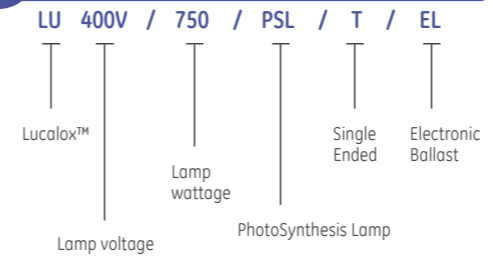


750W EL
 Lamp volts: 205V
 Current: 4.4A
 Wattage: 765W
 100 h lumens: 104 000
 100 h PAR: 1390 μmole/sec
 Packing: 12 or 63
 (Electronic ballast)

Single Ended 400V

Volts	Current (A)	Wattage (W)	Product Description	Product Code (12 pack)	Product Code (63 pack)	TU Product Code	Max Length (mm)	Arc gap (mm)	LCL C (mm)	Diameter (mm)	Cap	100 hour lumens (Lumens)	100 hour PAR (μmole/sec)	Bulb glass	Operating position	Model
230V - E40 Cap																
115	2.7	250	LU250W/PSL/T/E40	88665	-	-	260	64	158	48	E40/45	33 000	430	Hard	Universal	1
110	4.3	420	LU400W/PSL/T/E40	17106	44304	-	292	87	175	48	E40/45	56 500	710	Hard	Universal	2
115	6.0	615	LU600W/PSL/T/E40	17107	44305	-	292	125	169	48	E40/45	90 000	1080	Hard	Universal	1
115	7.4	755	LU750W/PSL/T/E40	17108	-	-	293	130	178	51	E40/45	112 000	1320	Hard	Universal	3
400V - E40 Cap																
200	3.6	620	LU400V/600W/PSL/T/E40/EL	63919	63922	-	292	124.5	169	48	E40/45	85 000	1120	Hard	Universal	4
205	4.4	765	LU400V/750W/PSL/T/2/E40/ EL 1/12	43438	43437	-	293	143	175	51	E40/45	104 000	1390	Hard	Universal	3

Product Description - explanation
 For further information check the glossary



Specialty Lamps / Special Solutions Lamps

Product overview



Black Light T8

Lamp volts: 55V
Wattage: 15W
Cap: G13
Rated life: 7 500 h
Packing: 25



covRguard™ Polylux XLR™

Wattages: 18 - 58W
Colours: White and Cool White
CRI (Ra): 80+
Rated life: 15 000 h
Packing: 25

Health and Safety



UVA Blacklight Biax™

Lamp volts: 60V
Wattage: 9W
Cap: G23
Rated life: 167 h
Packing: 10



UVA Blacklight Biax™ L

Lamp volts: 106V
Wattage: 36W
Cap: 2G11
Rated life: 1 280 h
Packing: 10

Insect Control



Quartz Heat

Lamp volts: 120 - 600V
Wattage: 500 - 3800W
Cap: Slv, R7s, CER
Rated life: 5 000 h
Packing: 6, 12

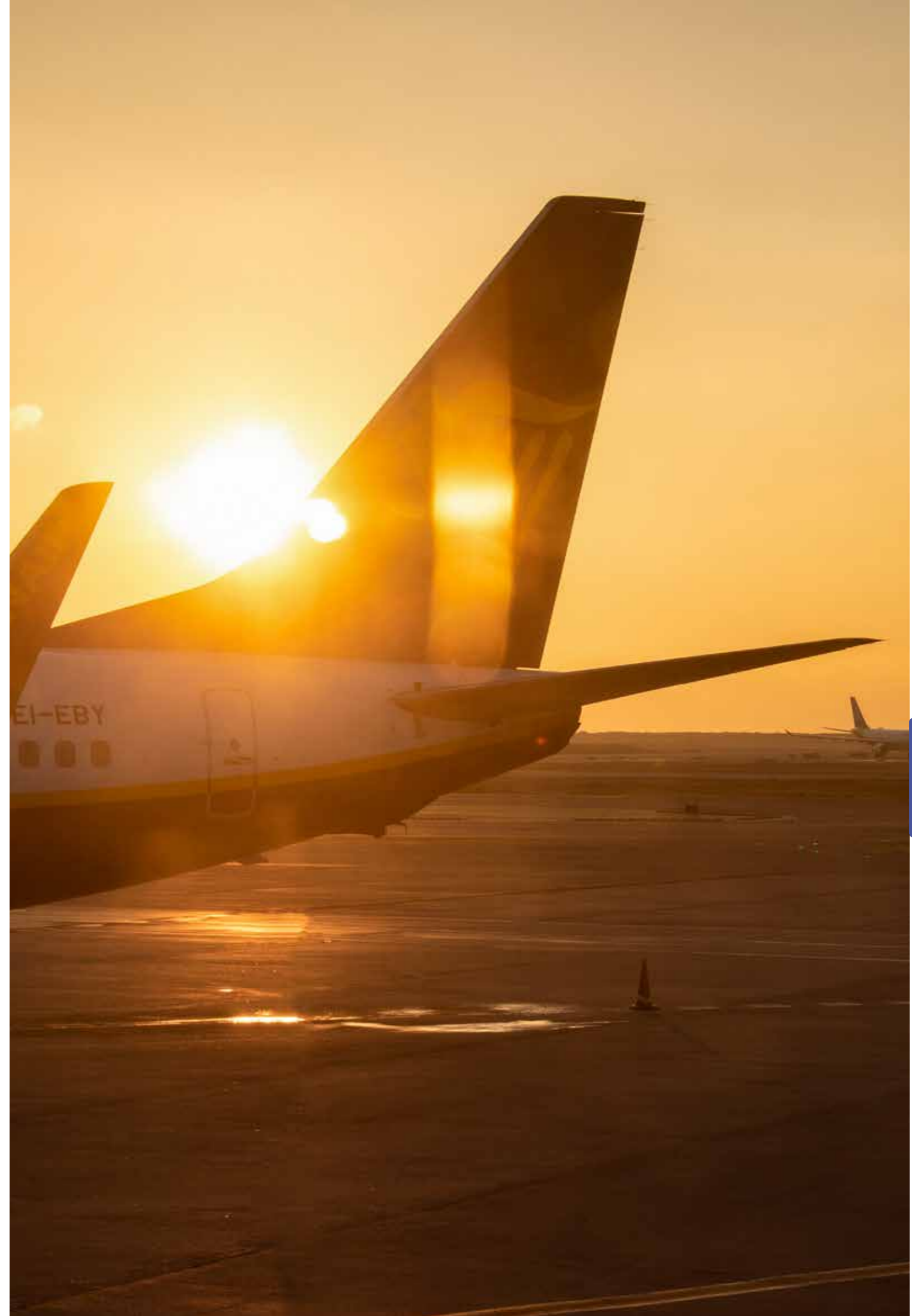


Airfield

Lamp volts: 6.6A to 120V
Wattage: 30 - 1000W
Cap: Various
Rated life: 30 - 1 000 h
Packing: Various

Industrial Heating

Airfield



Specialty Lamps / Special Solutions Lamps

Insect Control

Model	Wattage (W)	Volts	Cap	Product Description	GE Product Code	TU Product Code	Initial UVA Irradiance (mW/cm ² @ 20cm)	Peak Wavelength (nm)	Rated life (h)	Length (mm)	Pack Qty
UVA Blacklight Biax™ - Internal Starter											
1	9	60	G23	F98X BL G23	42935	-	440	368	167	440	10
UVA Blacklight Biax™ L - External Starter											
-	36	106	2G11	F368X BL 2G11	42940	-	1280	368	1 280	421.8	10

Industrial Heating

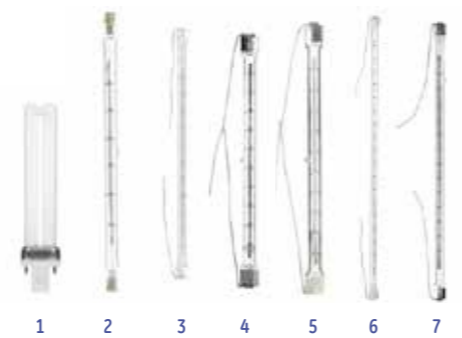
Model	Wattage (W)	Volts	Cap	Product Description	GE Product Code	TU Product Code	CCT (K)	Rated life (h)	Length (mm)	Pack Qty
Quartz Heat										
2	500	120	R7S	QH500T3/CL/7	21787	93106443	2400	5 000	220.5	12
3	1000	230-250	Slv	QH1000T3/CL	22357	93106444	2400	5 000	351	12
4	1200	144	Slv	QH1200T3/CL	22531	93106445	2450	5 000	223.8	12
5	1200	144	Slv	QH1200T3/CL/HT	22532	93106446	2450	5 000	223.8	12
6	1600	230-250	Slv	QH1600T3/CL	22688	93106447	2400	5 000	503	12
7	2000	230-250	Slv	QH2M/T3/CL/HT	22790	93110351	2450	5 000	350.8	12
6	2500	460-500	Slv	QH2500T3/CL	-	-	2400	5 000	731	12
	2500	400	Special	QH2500MT3/CL/HT/R	28126	93110352	2450	5000	381.5	12
	3000	400	Special	QH3MT3/CL/HT/R	28127	93110353	2450	5000	381.5	12
	3800	550-600	Slv	QH3800/CL	22875	-	2500	5 000	1062	6

Product Description - explanation

For further information check the glossary

F15T8 / BL 368

(F) Identifies the lamp as Fluorescent
 (15T8) Identifies the lamp's wattage and diameter
 (BL) Identifies product type



Specialty Lamps / Special Solutions Lamps



Airfield

Wattage (W)	Volts	Cap	Product Description	GE Product Code	TU Product Code	Lumen (lm)	Rated life (h)	Length (mm)	Pack Qty	Model
Aircraft and airfield Lighting										
13	-	G5	5113WW 13W 1/24	28178*/ 93099012	93110789	790	7500	525	24	-
65	-	Special	TU Q65T2 1/2/1CL MIH	32917	-	1500	1000	60	100	-
100	10	Special	1978X 10	38545	93106457	1634	2000	54.6	10	-
100	28	Special	1970X 28	41938	93106458	1700	1000	57.1	10	-
45	6.6A	Mycalex cap & Prefocus collar	AF6/2 6.6A 45W	88420	93106462	760	600	54	100	8
100	6.6A	Mycalex cap & Prefocus collar	AF 6/5T 6.6A 100W	88417	93106461	2 100	600	60	100	9
200	6.6A	Mycalex cap & Prefocus collar	AF7/2 6.6A 200W	88413	93106460	4 800	600	54	100	10
300	20A	Mog End Pr GX16d	Q20A/PAR56/C	15482*	-	NA	500	127	12	12
1000	120	G38 Mog BiPost	IM T20BP	88525	93106532	22 000	500	241	12	13

*Will be phased out





tungram.com

TUNGSRAMTM

Innovation is our heritage
EST. 1896

Traditional Lamps
Product Catalogue
April 2019

We in Tungram Operations Kft. are constantly developing and improving our products. For this reason, all product descriptions in this catalogue are intended as a general guide, and we may change specifications from time to time in the interest of product development, without prior notification or public announcement. All descriptions in this publication present only general particulars of the goods to which they refer and shall not form part of any contract. Data in this guide has been obtained in controlled experimental conditions. However, Tungram cannot accept any liability arising from the reliance on such data to the extent permitted by law.